

Retail Center For Sale or Lease

1024 N. Flood
Norman, Oklahoma



Property Information

Property Type: Retail
Property ID:
17507274/17507284
Sell/Lease/Both: Both
Land In Acres: 2.09 MOL
Zoning: C-2
Total SF: 37,000 MOL
Vacant SF: 31,375 MOL
General Use: Retail
Dimensions: 268' x 361'
Frontage: 361' on Flood
Visibility: Good Visibility

Property Highlights

- Retail Center on Busy Street in Norman
- Great Possibilities for Re-Purposing
- On a Newly Renovated Street
- Clean Brick Facade
- Great Potential for Office, School or Church
- Located on Flood (Highway 77) just South of Robinson
- Located in the Largest Suburb of Oklahoma City
- 3 Miles from the University of Oklahoma
- 1 Mile from Historic Downtown Norman

Spaces Available:

1042: 2,000 SF
1040: 4,000 SF
1030: 3,600 SF
1022: 1,800 SF
1020: 3,600 SF
1014: 4,000 SF
1010: 8,000 SF

Sales Price:
\$1,600,000

Lease Price:
\$8.00/SF NNN

Demographics At A Glance

Population:

■ 1 Mile: 9,577 ■ 3 Mile: 75,281 ■ 5 Mile: 101,151

Average Household Income:

■ 1 Mile: \$47,219 ■ 3 Mile: \$57,086 ■ 5 Mile: \$61,208

Total Households:

■ 1 Mile: 4,256 ■ 3 Mile: 31,648 ■ 5 Mile: 41,849

contact information

David Hartnack

office: 405 840 0600

fax: 405 840 0610

cell: 405 761 8955

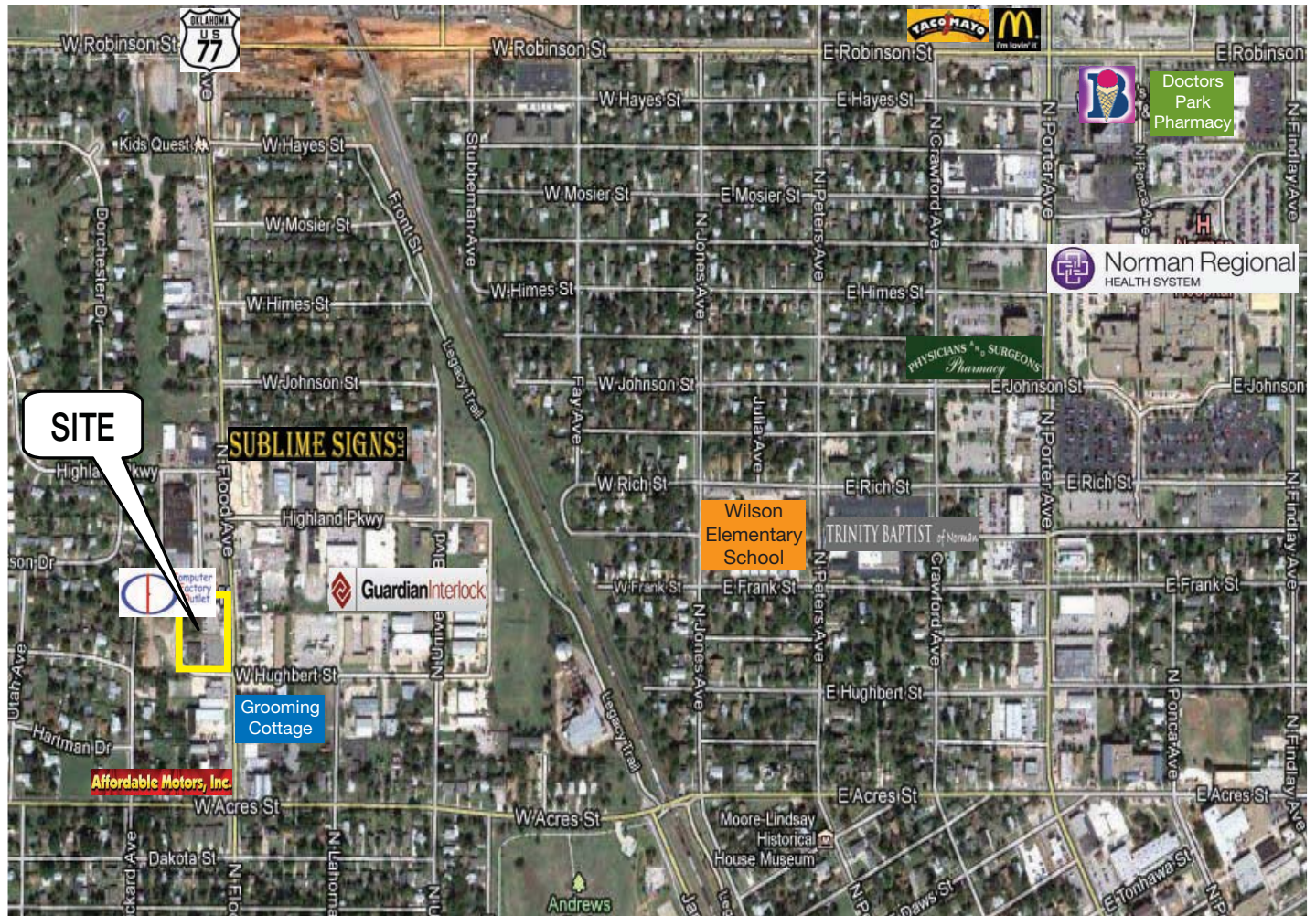
email: davidh@naisullivangroup.com

www.naisullivangroup.com

NAI Sullivan Group

Commercial Real Estate Services, Worldwide.

R261



Typical Bank Financing	
Sales Price:	\$1,600,000.00
Down Payment (20%):	\$320,000.00
Loan Amount:	\$1,280,000.00
Monthly Payment-20 Years @ 6.5%:	\$9,548.80

Above Information from reliable sources, but not guaranteed, offered subject to errors, omissions, previous sale, change in price and withdrawal without notice.