



## 1600 Linwood Boulevard

Oklahoma City, Oklahoma 73106

### PROPERTY HIGHLIGHTS

- Former Church
- Fenced in Yard Space
- Multiple Private Offices
- Fully Climate Controlled
- Close Proximity to Downtown OKC



TOTAL SF **5,450 SF**

TOTAL ACRES **0.26 Acres**

BUILT/RENOVATED **1929**

ZONED **C-4**

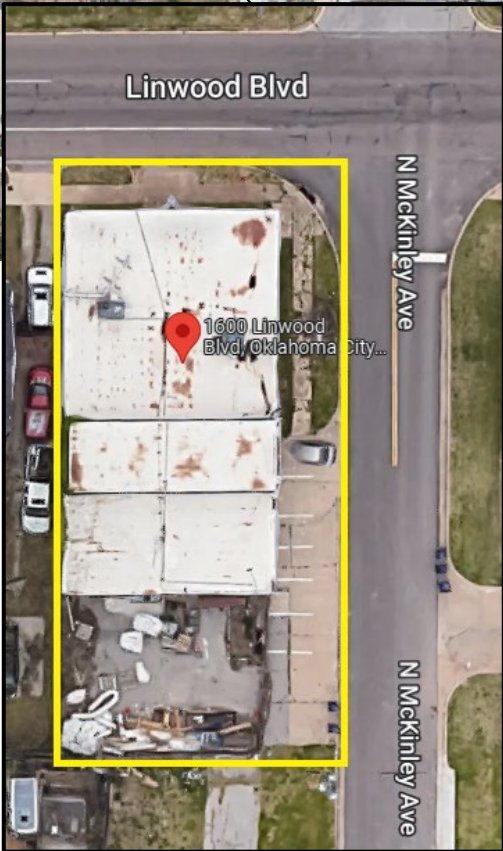
NO WARRANTY OR REPRESENTATION, EXPRESS OR IMPLIED, IS MADE AS TO THE ACCURACY OF THE INFORMATION CONTAINED HEREIN, AND THE SAME IS SUBMITTED SUBJECT TO ERRORS, OMISSIONS, CHANGE OF PRICE, RENTAL OR OTHER CONDITIONS, PRIOR SALE, LEASE OR FINANCING, OR WITHDRAWAL WITHOUT NOTICE, AND OF ANY SPECIAL LISTING CONDITIONS IMPOSED BY OUR PRINCIPALS NO WARRANTIES OR REPRESENTATIONS ARE MADE AS TO THE CONDITION OF THE PROPERTY OR ANY HAZARDS CONTAINED THEREIN ARE ANY TO BE IMPLIED.

**Amir Shams**  
+1 405 313 0333  
amir@naisullivangroup.com

4045 N.W. 64<sup>th</sup> Street, Suite 340  
Oklahoma City, OK 73116  
[www.naisullivangroup.com](http://www.naisullivangroup.com)

**Zac McQueen**  
+1 405 476 9199  
zac@naisullivangroup.com

+1 405 840 0600 OFFICE  
+1 405 840 0610 FAX



### LOCATION HIGHLIGHTS

- 1 Mile From Midtown OKC
- 1.5 Miles From NW 16th Street Corridor



Population	1 Mile: 13,793	3 Miles: 92,679	5 Miles: 233,144
Average Household Income	1 Mile: \$66,331	3 Miles: \$64,321	5 Miles: \$59,840
Total Households	1 Mile: 4,363	3 Miles: 36,916	5 Miles: 92,694

NO WARRANTY OR REPRESENTATION, EXPRESS OR IMPLIED, IS MADE AS TO THE ACCURACY OF THE INFORMATION CONTAINED HEREIN, AND THE SAME IS SUBMITTED SUBJECT TO ERRORS, OMISSIONS, CHANGE OF PRICE, RENTAL OR OTHER CONDITIONS, PRIOR SALE, LEASE OR FINANCING, OR WITHDRAWAL WITHOUT NOTICE, AND OF ANY SPECIAL LISTING CONDITIONS IMPOSED BY OUR PRINCIPALS NO WARRANTIES OR REPRESENTATIONS ARE MADE AS TO THE CONDITION OF THE PROPERTY OR ANY HAZARDS CONTAINED THEREIN ARE ANY TO BE IMPLIED.

**Amir Shams**  
+1 405 313 0333  
amir@naisullivangroup.com

**Zac McQueen**  
+1 405 476 9199  
zac@naisullivangroup.com

4045 N.W. 64th Street, Suite 340  
Oklahoma City, OK 73116  
[www.naisullivangroup.com](http://www.naisullivangroup.com)

+1 405 840 0600 OFFICE  
+1 405 840 0610 FAX