

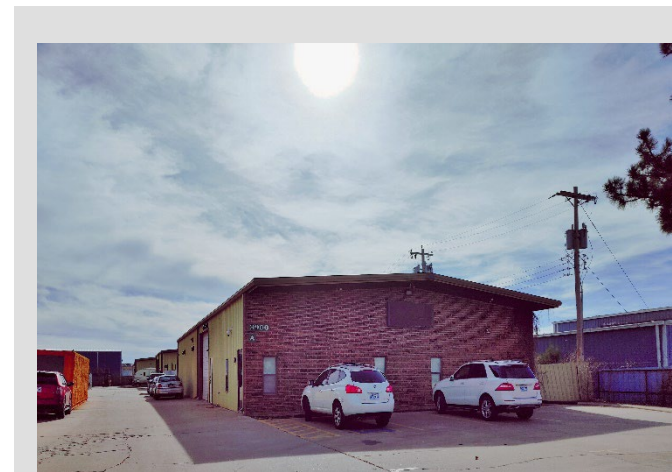


## 3900 S.W. 113<sup>th</sup> Street, Suite A

Oklahoma City, Oklahoma 73173

### PROPERTY HIGHLIGHTS

- (5) 20' x 20' Bloom Rooms
- 800 Gallon RO System
- 310 Lights
- Each Room has Independent Breakers
- Built in Back Up Generator Connections
- Clone Room
- Dry Room
- Charcoal Fans
- 2,500 SF Outdoor Space Available for Greenhouse
- (2) 128 Site EZ Clone Machine
- Full Kitchen
- 3 Phase 480 Volt Power
- 1 Grade Level Door
- Cultivation & Seed License Negotiable
- Real Estate NOT INCLUDED



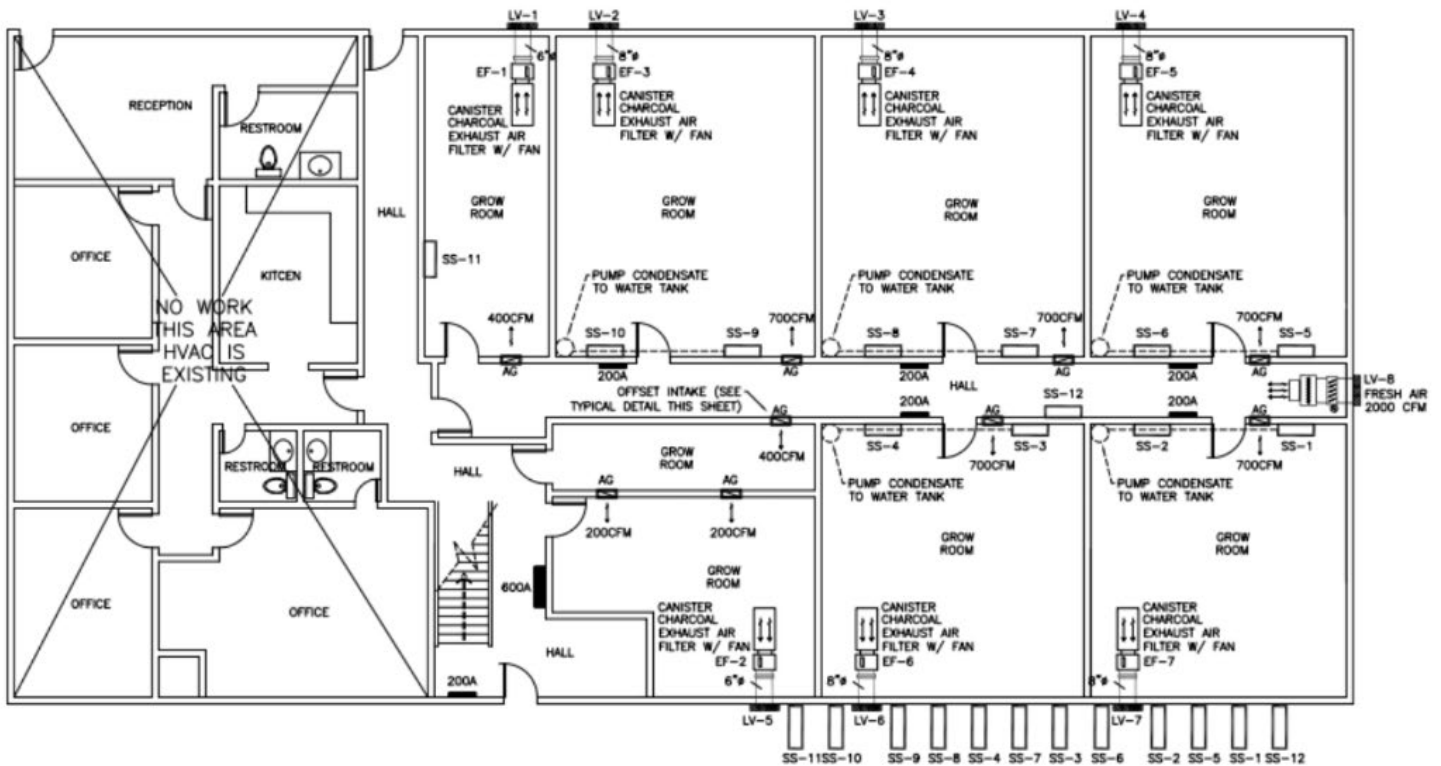
TOTAL SF	4,500 SF
YEAR BUILT / RENOVATED	1979
ZONED	I-1

NO WARRANTY OR REPRESENTATION, EXPRESS OR IMPLIED, IS MADE AS TO THE ACCURACY OF THE INFORMATION CONTAINED HEREIN, AND THE SAME IS SUBMITTED SUBJECT TO ERRORS, OMISSIONS, CHANGE OF PRICE, RENTAL OR OTHER CONDITIONS, PRIOR SALE, LEASE OR FINANCING, OR WITHDRAWAL WITHOUT NOTICE, AND OF ANY SPECIAL LISTING CONDITIONS IMPOSED BY OUR PRINCIPALS NO WARRANTIES OR REPRESENTATIONS ARE MADE AS TO THE CONDITION OF THE PROPERTY OR ANY HAZARDS CONTAINED THEREIN ARE ANY TO BE IMPLIED.

**Krystal Deak**  
+1 580 512 3631  
[krystal@naisullivangroup.com](mailto:krystal@naisullivangroup.com)

4045 N.W. 64<sup>th</sup> Street, Suite 340  
Oklahoma City, OK 73116  
[www.naisullivangroup.com](http://www.naisullivangroup.com)

+1 405 840 0600 OFFICE  
+1 405 840 0610 FAX



NO WARRANTY OR REPRESENTATION, EXPRESS OR IMPLIED, IS MADE AS TO THE ACCURACY OF THE INFORMATION CONTAINED HEREIN, AND THE SAME IS SUBMITTED SUBJECT TO ERRORS, OMISSIONS, CHANGE OF PRICE, RENTAL OR OTHER CONDITIONS, PRIOR SALE, LEASE OR FINANCING, OR WITHDRAWAL WITHOUT NOTICE, AND OF ANY SPECIAL LISTING CONDITIONS IMPOSED BY OUR PRINCIPALS NO WARRANTIES OR REPRESENTATIONS ARE MADE AS TO THE CONDITION OF THE PROPERTY OR ANY HAZARDS CONTAINED THEREIN ARE ANY TO BE IMPLIED.

**Krystal Deak**  
 +1 580 512 3631  
[krystal@naisullivangroup.com](mailto:krystal@naisullivangroup.com)  
 4045 N.W. 64<sup>th</sup> Street, Suite 340  
 Oklahoma City, OK 73116  
[www.naisullivangroup.com](http://www.naisullivangroup.com)

**+1 405 840 0600 OFFICE**  
**+1 405 840 0610 FAX**