

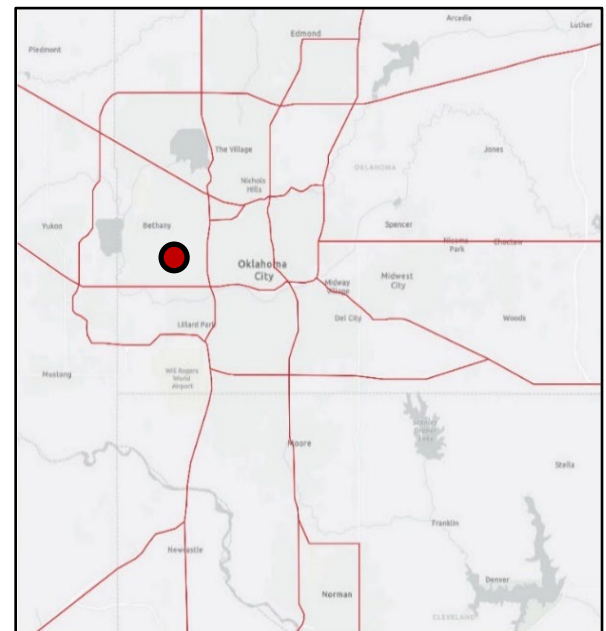


Build to Suit Price: Call For Pricing

100 N. Meridian Avenue
 Oklahoma City, Oklahoma 73107

PROPERTY HIGHLIGHTS

- **22.60 Acres MOL**
- 5,000 SF – 10,000 Industrial Site
- Zoned I-2, Moderate Industrial
- 430' of Frontage on N. Meridian Avenue
- Build to Suit Opportunity
- Conveniently located close to I-40 and Will Rogers World Airport
- Numerous Restaurants & Hotels within 1 Mile



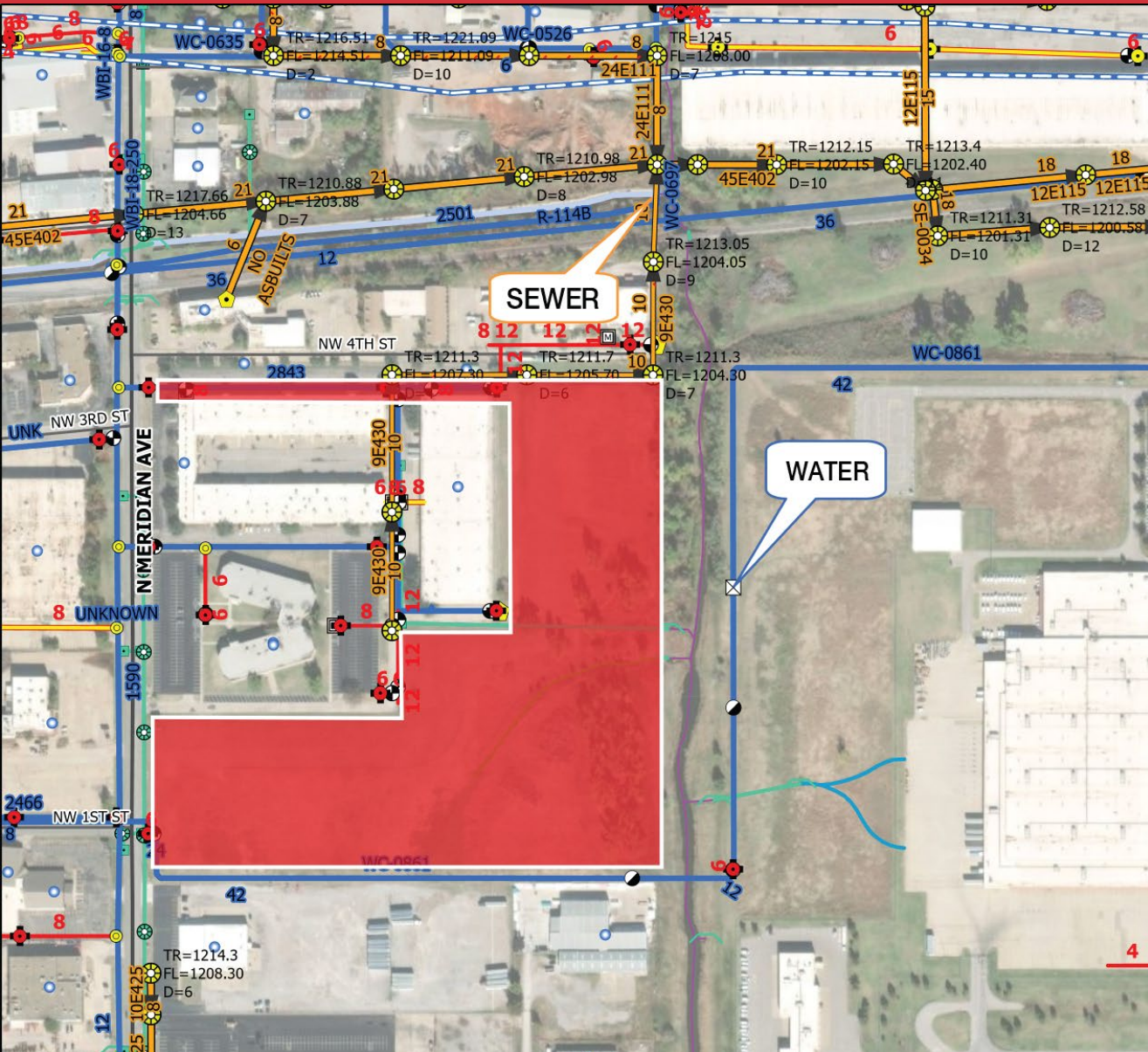
Matthew Pierce
 +1 405 203 3636
 matt@naisullivangroup.com

Cade Flesner
 +1 760 889 2305
 cade@naisullivangroup.com

+1 405 840 0600 OFFICE

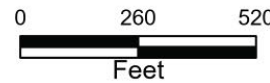
4045 N.W. 64th Street, Suite 340
 Oklahoma City, OK 73116

www.naisullivangroup.com



ATLAS

The City nor any of its Trusts nor any of their employees, officers, or agents warrant or represent that the information or data on this document is accurate or appropriate for use or re-use for any purpose. The user of this document assumes the sole duty and full responsibility for the verification of the information and data contained therein. Any use of reliance upon this document of the information or data contained therein is solely, totally, and exclusively at the users own risk.



- Legend**
- Wastewater Main
 - Water Main
 - Fire Hydrant
 - Private Hydrant
 - Storm Drain

Population	1 Mile: 4,280	3 Miles: 74,761	5 Miles: 219,008
Average Household Income	1 Mile: \$43,904	3 Miles: \$56,404	5 Miles: \$64,289
Total Households	1 Mile: 1,729	3 Miles: 29,541	5 Miles: 86,847

Matthew Pierce
+1 405 203 3636
matt@naisullivangroup.com

Cade Flesner
+1 760 889 2305
cade@naisullivangroup.com

+1 405 840 0600 OFFICE

4045 N.W. 64th Street, Suite 340
 Oklahoma City, OK 73116

www.naisullivangroup.com