

108 S.E. 27TH STREET
EL RENO, OK 73036

Former Body Shop / Industrial Building
For Sale or Lease

8,000 RSF on 0.55 Acres MOL

\$650,000

\$7.25/SF/YR/NNN

NAIRED

COMMERCIAL
REAL ESTATE



NAIRED

405.840.0600
NAIRED.COM

BOB SULLIVAN, CCIM
405.641.9798
RSULLIVAN@CCIM.NET

CLARK EVERETT
405.985.8424
CLARK@NAIRED.COM



PROPERTY HIGHLIGHTS

- Used as Body Shop for Many Years
- (3) 12' Drive In Doors
- (2) 10' Drive In Doors
- 800 SF Office
- 12' Clear Height
- 400 Amps Power
- Built in 1979
- Zoned: CR (Commercial Restricted)

LOCATION HIGHLIGHTS

- Located on S.E. 27th in El Reno
- 1 Mile from I-40
- Expanding Area of El Reno

NAIRED

405.840.0600
NAIRED.COM

BOB SULLIVAN, CCIM
405.641.9798
RSULLIVAN@CCIM.NET

CLARK EVERETT
405.985.8424
CLARK@NAIRED.COM

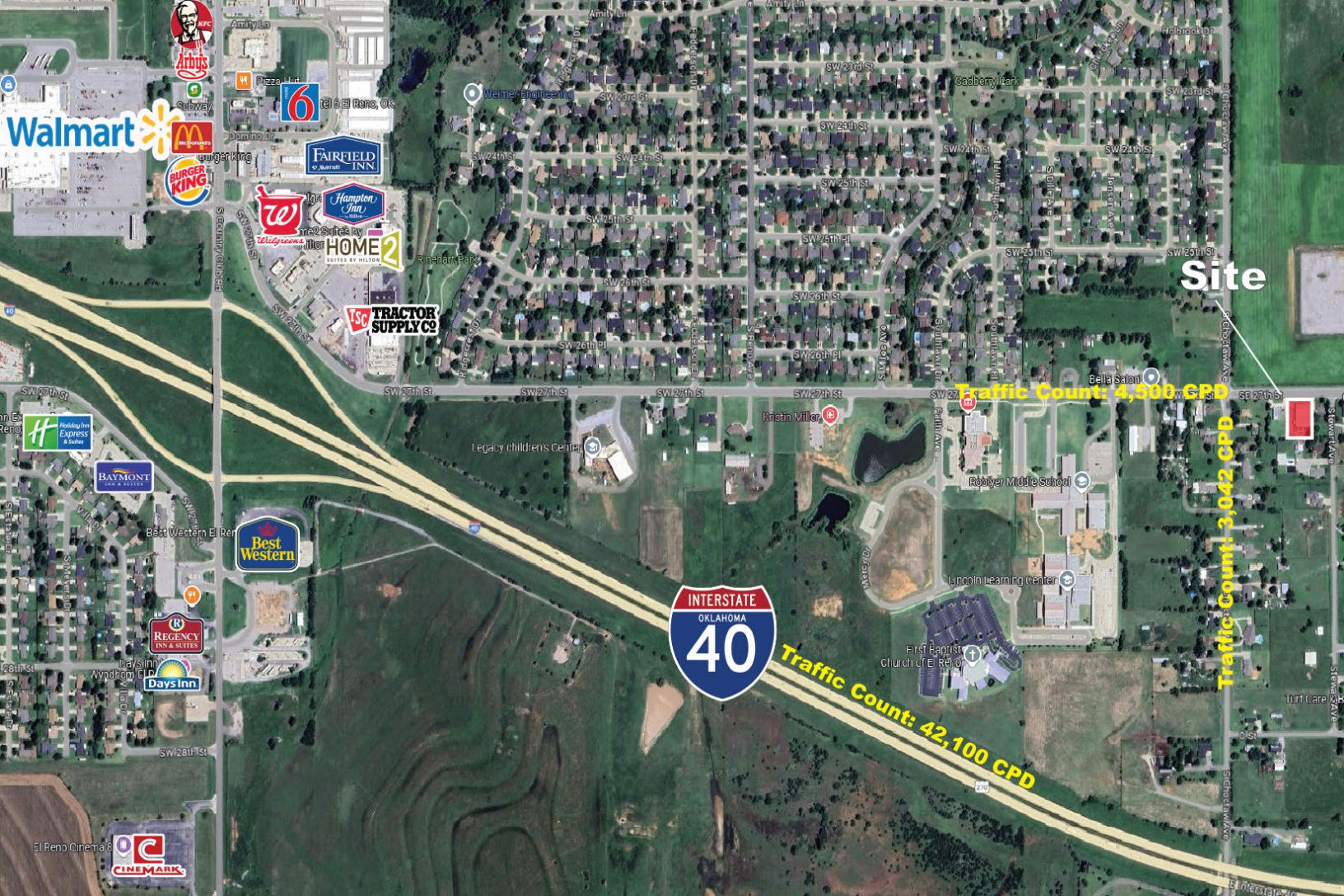


NAIRED

405.840.0600
NAIRED.COM

BOB SULLIVAN, CCIM
405.641.9798
RSULLIVAN@CCIM.NET

CLARK EVERETT
405.985.8424
CLARK@NAIRED.COM



DEMOGRAPHICS

| | 1 MILE | 3 MILE | 5 MILE |
|--------------------------|----------|----------|----------|
| POPULATION | 3,189 | 16,024 | 18,272 |
| AVERAGE HOUSEHOLD INCOME | \$75,851 | \$68,940 | \$70,797 |
| TOTAL HOUSEHOLDS | 1,137 | 5,767 | 6,098 |

405.840.0600

NAIRED.COM

FOLLOW US @NAIRED_CRE

No warranty or representation, express or implied, is made as to the accuracy of the information contained herein, and the same is submitted subject to errors, omissions, change of price, rental or other conditions, prior to sale, lease, or financing, or withdrawal without notice, and of any special listing conditions imposed by our principals no warranties or representations are made as to the condition of the property or any hazards contained therein are any to be implied.