

1212 S. WOODLAWN BOULEVARD
WICHITA, KS 67218

Retail Building For Sub-Lease

Call For Pricing

23,588 SF on 2.28 Acres MOL

NAIRED

COMMERCIAL
REAL ESTATE



NAIRED

405.840.0600
NAIRED.COM

DAVID HARTNACK
405.761.8955
DAVID@NAIRED.COM

SAM SWANSON
405.208.2046
SAM@NAIRED.COM

NATHAN WILSON
405.760.5327
NATHAN@NAIRED.COM



PROPERTY HIGHLIGHTS

- Available December 1, 2024
- Former Locke Supply
- Adjacent to Ace Hardware
- Sub-Lease Ends: 12-31-2029

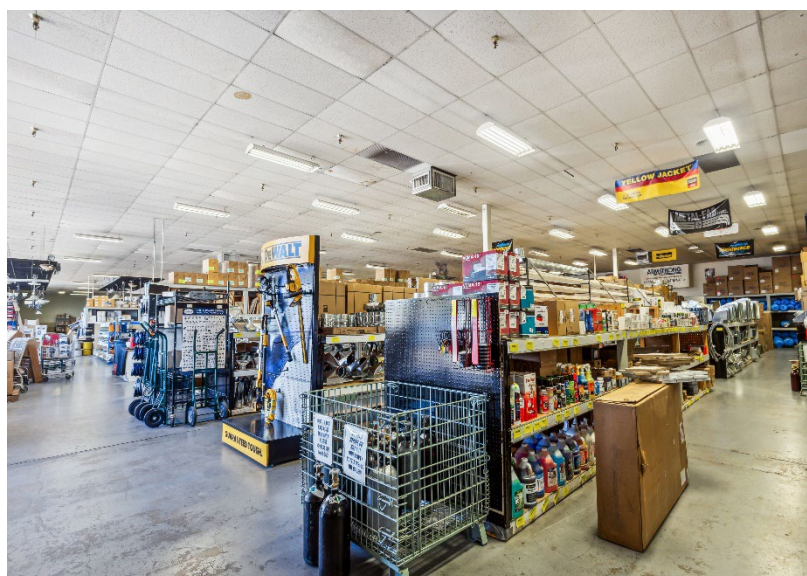
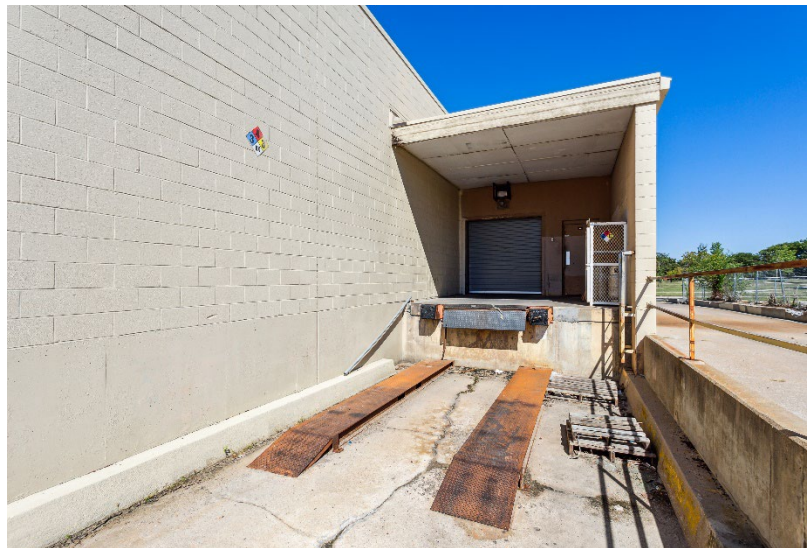
NAIRED

405.840.0600
NAIRED.COM

DAVID HARTNACK
405.761.8955
DAVID@NAIRED.COM

SAM SWANSON
405.208.2046
SAM@NAIRED.COM

NATHAN WILSON
405.760.5327
NATHAN@NAIRED.COM



NAIRED

405.840.0600
NAIRED.COM

DAVID HARTNACK
405.761.8955
DAVID@NAIRED.COM

SAM SWANSON
405.208.2046
SAM@NAIRED.COM

NATHAN WILSON
405.760.5327
NATHAN@NAIRED.COM



DEMOGRAPHICS

	1 MILE	3 MILE	5 MILE
POPULATION	12,566	85,861	181,493
AVERAGE HOUSEHOLD INCOME	\$51,219	\$82,951	\$82,632
TOTAL HOUSEHOLDS	5,476	35,147	72,785

NAIRED

405.840.0600
NAIRED.COM

FOLLOW US @NAIRED_CRE



No warranty or representation, express or implied, is made as to the accuracy of the information contained herein, and the same is submitted subject to errors, omissions, change of price, rental or other conditions, prior to sale, lease, or financing, or withdrawal without notice, and of any special listing conditions imposed by our principals no warranties or representations are made as to the condition of the property or any hazards contained therein are any to be implied.