

1400 S. YUKON PARKWAY  
OKLAHOMA CITY, OK 73099

Office Space For Lease

1,000 SF on 0.30 Acres MOL

Lease Price: \$2,000/Month Modified Gross



**NAIRED**

COMMERCIAL  
REAL ESTATE

**NAIRED**

405.840.0600  
NAIRED.COM

BOB SULLIVAN, CCIM  
405.641.9798  
RSULLIVAN@CCIM.NET

CLARK EVERETT  
405.985.8424  
CLARK@NAIRED.COM



## PROPERTY HIGHLIGHTS

- Located on Busy N. Mustang Road
- 3 Offices
- Zoned: I-2 Moderate Industrial
- Lot for Storage For Possible Outside Sales
- 100 Amps Power

## LOCATION HIGHLIGHTS

- Growing Yukon Market
- Within 1 Mile of I-40 Entrance/Exit
- Within 1 Mile of Kilpatrick Turnpike

**NAIRED**

**405.840.0600**  
**NAIRED.COM**

**BOB SULLIVAN, CCIM**  
405.641.9798  
RSULLIVAN@CCIM.NET

**CLARK EVERETT**  
405.985.8424  
CLARK@NAIRED.COM





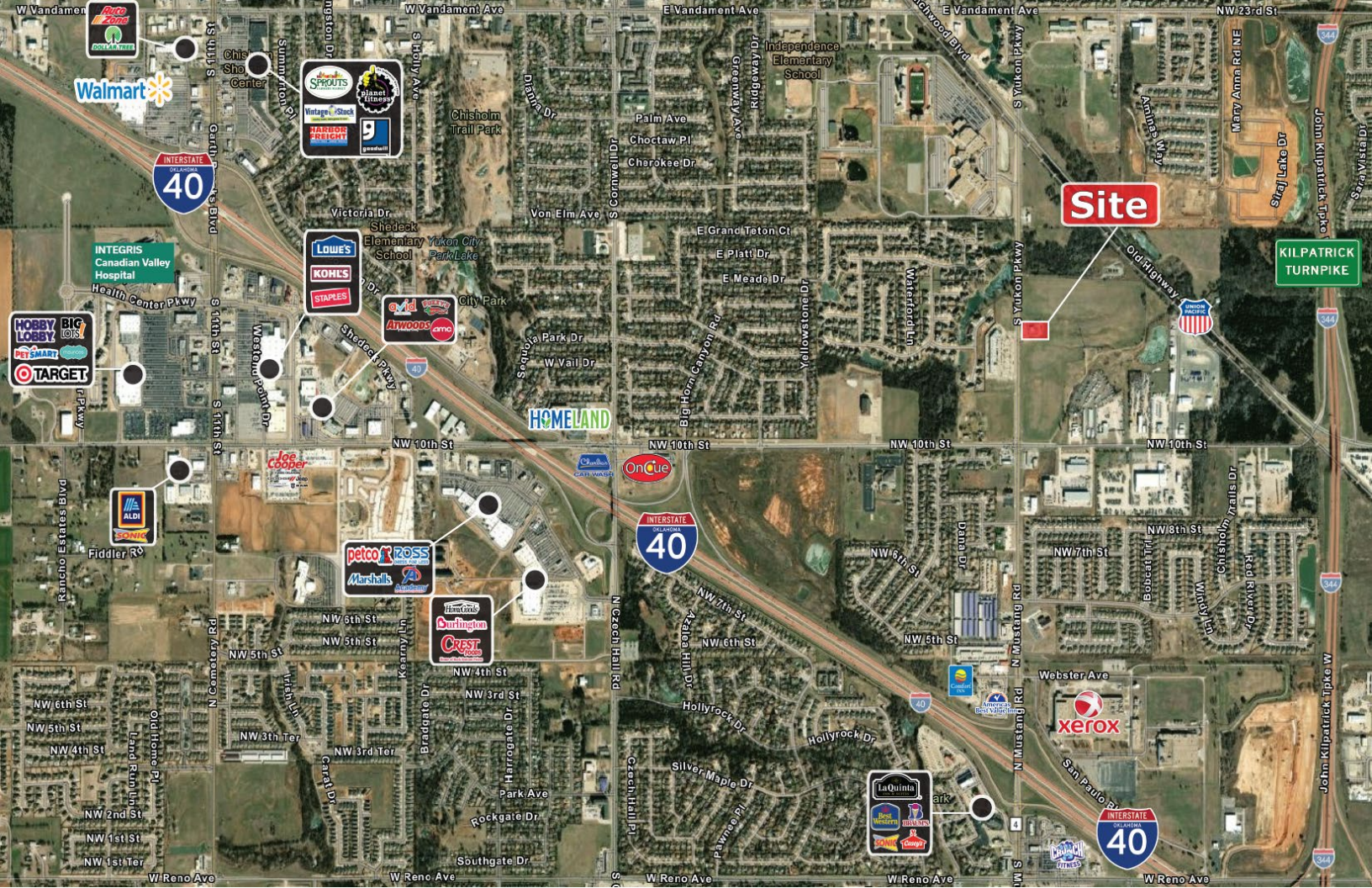
**NAIRED**

**405.840.0600**  
**NAIRED.COM**

**BOB SULLIVAN, CCIM**  
405.641.9798  
RSULLIVAN@CCIM.NET

**CLARK EVERETT**  
405.985.8424  
CLARK@NAIRED.COM





# DEMOGRAPHICS

	1 MILE	3 MILE	5 MILE
POPULATION	5,025	70,590	111,653
AVERAGE HOUSEHOLD INCOME	\$97,773	\$87,846	\$86,605
TOTAL HOUSEHOLDS	1,956	27,071	42,328

405.840.0600

NAIRED.COM

FOLLOW US @NAIRED\_CRE

No warranty or representation, express or implied, is made as to the accuracy of the information contained herein, and the same is submitted subject to errors, omissions, change of price, rental or other conditions, prior to sale, lease, or financing, or withdrawal without notice, and of any special listing conditions imposed by our principals no warranties or representations are made as to the condition of the property or any hazards contrained therein are any to be implied.