

1702 N. SOONER ROAD
MIDWEST CITY, OK 73141

Industrial Buildings For Sale

68,600 SF on 7.25 Acres MOL

\$2,500,000

CALL FOR OFFERS



NAIRED

COMMERCIAL
REAL ESTATE

NAIRED

405.840.0600
NAIRED.COM

DARRYL MEASON
405.205.9440
DARRYL@NAIRED.COM



PROPERTY HIGHLIGHTS

- I-2 Zoning
- 5 Buildings Totaling 68,600 SF
- Adjacent to Rail
- Ready to Refurbish & Repurpose

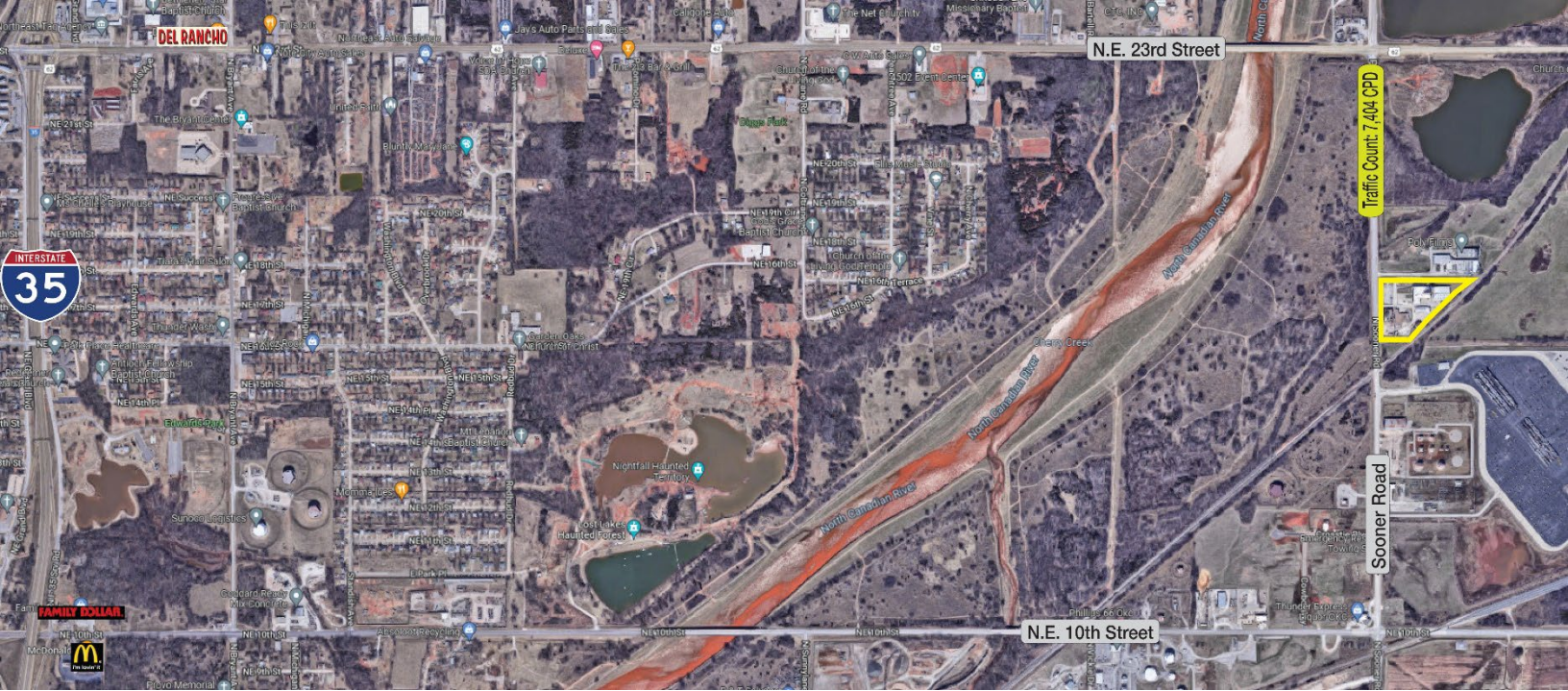
LOCATION HIGHLIGHTS

- 580' of Frontage on N. Sooner Road

NAIRED

405.840.0600
NAIRED.COM

DARRYL MEASON
405.205.9440
DARRYL@NAIRED.COM



DEMOGRAPHICS

	1 MILE	3 MILE	5 MILE
POPULATION	1,155	44,495	119,950
AVERAGE HOUSEHOLD INCOME	\$48,946	\$53,757	\$56,331
TOTAL HOUSEHOLDS	474	18,851	49,175

NAIRED

405.840.0600
NAIRED.COM

FOLLOW US @NAIRED_CRE



No warranty or representation, express or implied, is made as to the accuracy of the information contained herein, and the same is submitted subject to errors, omissions, change of price, rental or other conditions, prior to sale, lease, or financing, or withdrawal without notice, and of any special listing conditions imposed by our principals no warranties or representations are made as to the condition of the property or any hazards contained therein are any to be implied.