



2001 W. Memorial Road

Oklahoma City, Oklahoma 73134

PROPERTY HIGHLIGHTS

- 28.38 Acres MOL
- 1000' of Memorial Road Frontage
- Between Super Target and Main Event
- Located in Highly Active Retail/Quail Springs Mall Corridor
- Close Proximity to Chisholm Creek



TOTAL ACRES 28.38 Acres

ZONED 0-2

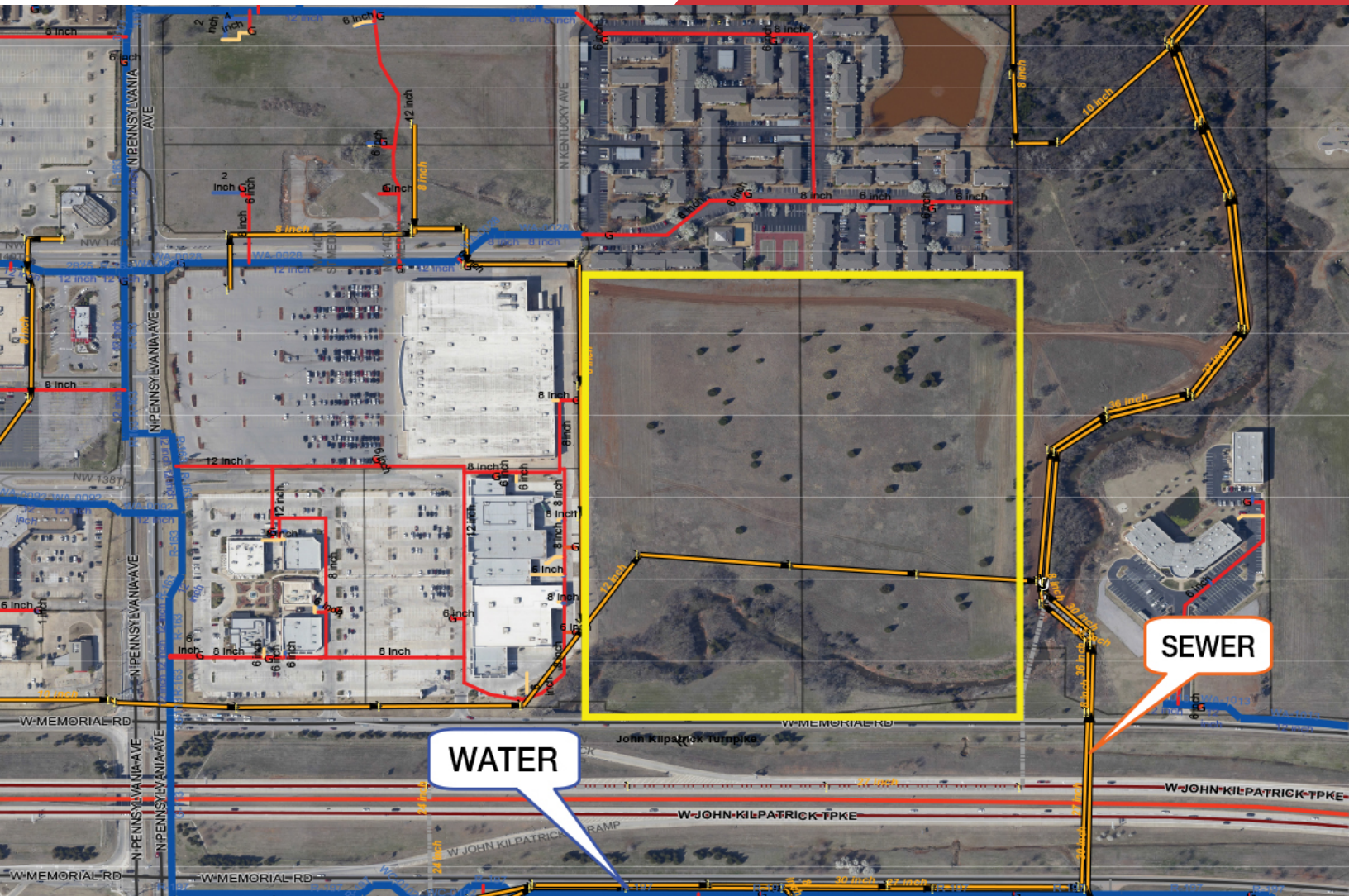
NO WARRANTY OR REPRESENTATION, EXPRESS OR IMPLIED, IS MADE AS TO THE ACCURACY OF THE INFORMATION CONTAINED HEREIN, AND THE SAME IS SUBMITTED SUBJECT TO ERRORS, OMISSIONS, CHANGE OF PRICE, RENTAL OR OTHER CONDITIONS, PRIOR SALE, LEASE OR FINANCING, OR WITHDRAWAL WITHOUT NOTICE, AND OF ANY SPECIAL LISTING CONDITIONS IMPOSED BY OUR PRINCIPALS NO WARRANTIES OR REPRESENTATIONS ARE MADE AS TO THE CONDITION OF THE PROPERTY OR ANY HAZARDS CONTAINED THEREIN ARE ANY TO BE IMPLIED.

David Hartnack
+1 405 761 8955
davidh@naisullivangroup.com

4045 N.W. 64th Street, Suite 340
Oklahoma City, OK 73116
www.naisullivangroup.com

Sam Swanson
+1 405 208 2046
sam@naisullivanqgroup.com

+1 405 840 0600 OFFICE
+1 405 840 0610 FAX



LOCATION HIGHLIGHTS

- Frontage: 1,031' on Memorial Road
- Dimensions: 1,031' x 1,180'

Population	1 Mile: 10,476	3 Miles: 68,876	5 Miles: 164,149
Average Household Income	1 Mile: \$48,421	3 Miles: \$62,648	5 Miles: \$66,735
Total Households	1 Mile: 5,868	3 Miles: 30,494	5 Miles: 69,039

NO WARRANTY OR REPRESENTATION, EXPRESS OR IMPLIED, IS MADE AS TO THE ACCURACY OF THE INFORMATION CONTAINED HEREIN, AND THE SAME IS SUBMITTED SUBJECT TO ERRORS, OMISSIONS, CHANGE OF PRICE, RENTAL OR OTHER CONDITIONS, PRIOR SALE, LEASE OR FINANCING, OR WITHDRAWAL WITHOUT NOTICE, AND OF ANY SPECIAL LISTING CONDITIONS IMPOSED BY OUR PRINCIPALS NO WARRANTIES OR REPRESENTATIONS ARE MADE AS TO THE CONDITION OF THE PROPERTY OR ANY HAZARDS CONTAINED THEREIN ARE ANY TO BE IMPLIED.

David Hartnack
+1 405 761 8955
davidh@naisullivangroup.com

Sam Swanson
+1 405 208 2046
sam@naisullivangroup.com

4045 N.W. 64th Street, Suite 340
Oklahoma City, OK 73116
www.naisullivangroup.com

+1 405 840 0600 OFFICE
+1 405 840 0610 FAX