

2609 & 2617 S. ANN ARBOR AVENUE
OKLAHOMA CITY, OK 73128

Industrial Space For Lease

Lease Price: \$12.00/SF/NNN

Estimated NNN Charges: \$2.40/SF/YR

6,750 SF-13,500 SF

NAIRED

COMMERCIAL
REAL ESTATE

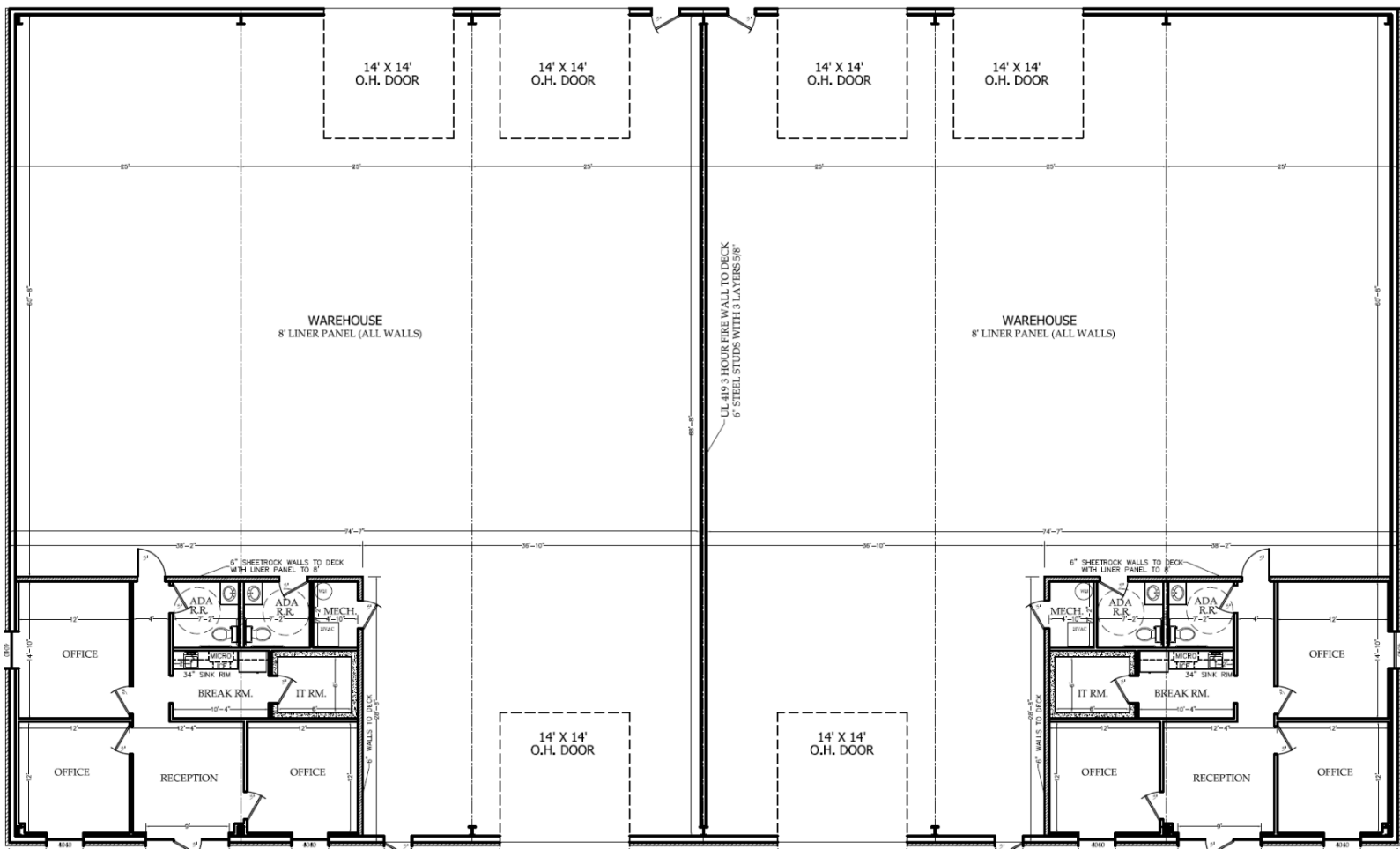


NAIRED

405.840.0600
NAIRED.COM

AMIR SHAMS
405.313.0333
AMIR@NAIRED.COM

ZAC MCQUEEN
405.476.9199
ZAC@NAIRED.COM



PROPERTY HIGHLIGHTS

- Brand New Construction - Expected Completion Q4 2025
- (2) 6,750 SF Suites (That Can Be Combined)
- Office Layout for Each Suite: (3) Private Offices, Break Room, and ADA Restroom
- Warehouse Layout for Each Suite: 5,656 SF of Warehouse with (3) 14'x14' Grade Level Doors and ADA Restroom
- Tornado Shelter in Each Suite
- Concrete & Fenced Outdoor Storage Yard
- +/- 20' Clear Height
- 200 Amp 120/208 Volt 3 Phase Service for Each Space

LOCATION HIGHLIGHTS

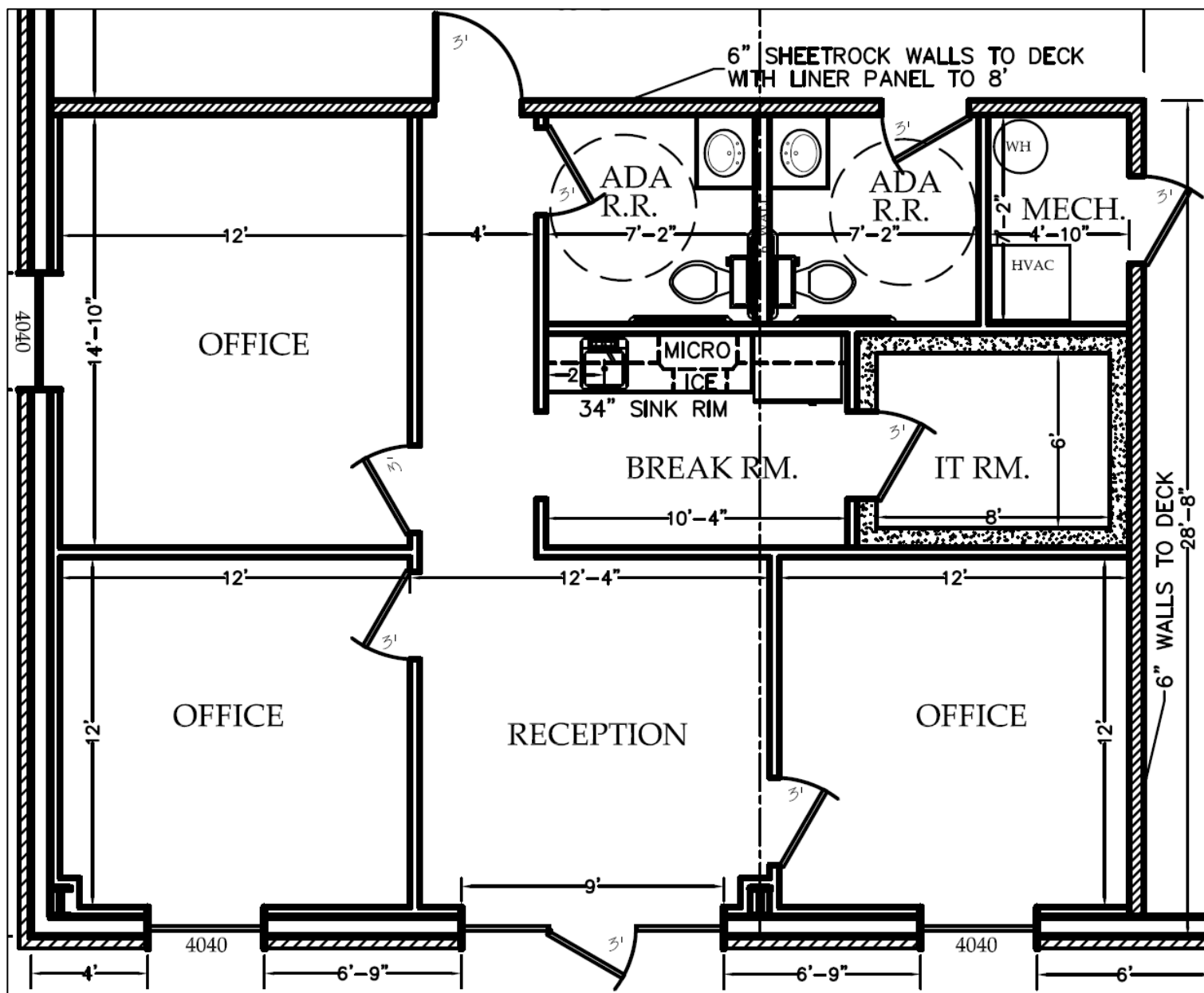
- Clean & Desirable Industrial Park
- Very Quick Access to Major Interstates & Airport

NAIRED

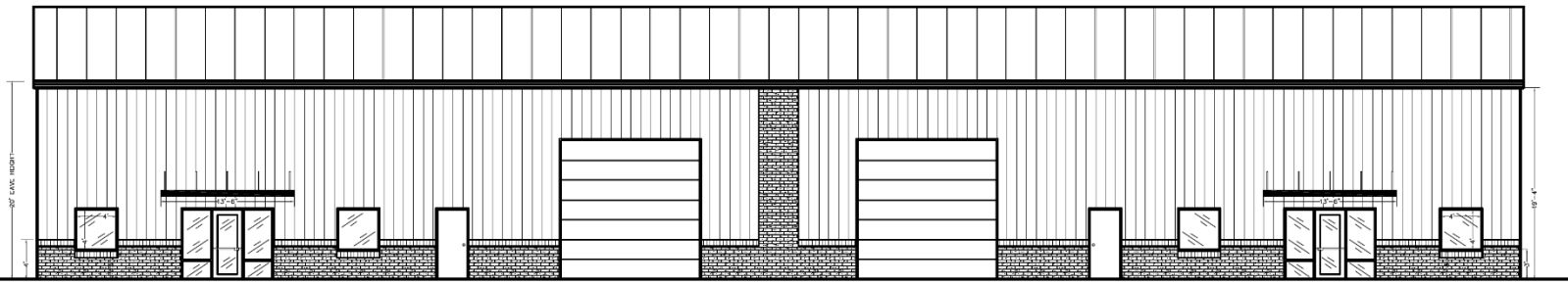
405.840.0600
NAIRED.COM

AMIR SHAMS
 405.313.0333
 AMIR@NAIRED.COM

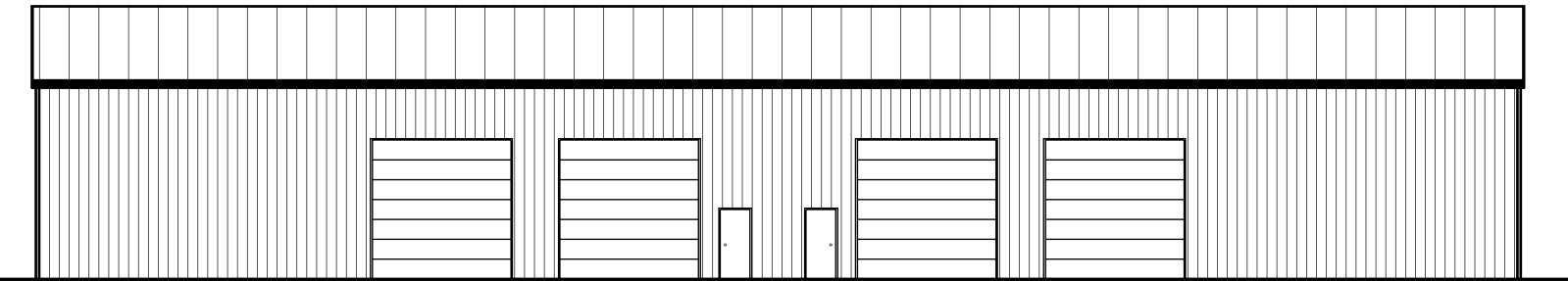
ZAC MCQUEEN
 405.476.9199
 ZAC@NAIRED.COM



NAIRED



EAST ELEVATION



WEST ELEVATION



NAIRED

405.840.0600
NAIRED.COM

AMIR SHAMS
405.313.0333
AMIR@NAIRED.COM

ZAC MCQUEEN
405.476.9199
ZAC@NAIRED.COM



NAIRED

405.840.0600
NAIRED.COM

AMIR SHAMS
405.313.0333
AMIR@NAIRED.COM

ZAC MCQUEEN
405.476.9199
ZAC@NAIRED.COM



DEMOGRAPHICS

	1 MILE	3 MILE	5 MILE
POPULATION	2,433	28,949	177,761
AVERAGE HOUSEHOLD INCOME	\$84,629	\$48,425	\$60,892
TOTAL HOUSEHOLDS	1,002	10,601	64,615

NAIRED

405.840.0600
NAIRED.COM

FOLLOW US @NAIRED_CRE



No warranty or representation, express or implied, is made as to the accuracy of the information contained herein, and the same is submitted subject to errors, omissions, change of price, rental or other conditions, prior to sale, lease, or financing, or withdrawal without notice, and of any special listing conditions imposed by our principals no warranties or representations are made as to the condition of the property or any hazards contained therein are any to be implied.