

26567 N. COUNTY ROAD 3250
WYNNEWOOD, OK 73098

Retail / Industrial Building For Sale

1,200 SF on 1 Acre MOL

\$195,000



NAIRED

COMMERCIAL
REAL ESTATE

NAIRED

405.840.0600
NAIRED.COM

BOB SULLIVAN, CCIM
405.641.9798
RSULLIVAN@CCIM.NET

CLARK EVERETT
405.985.8424
CLARK@NAIRED.COM

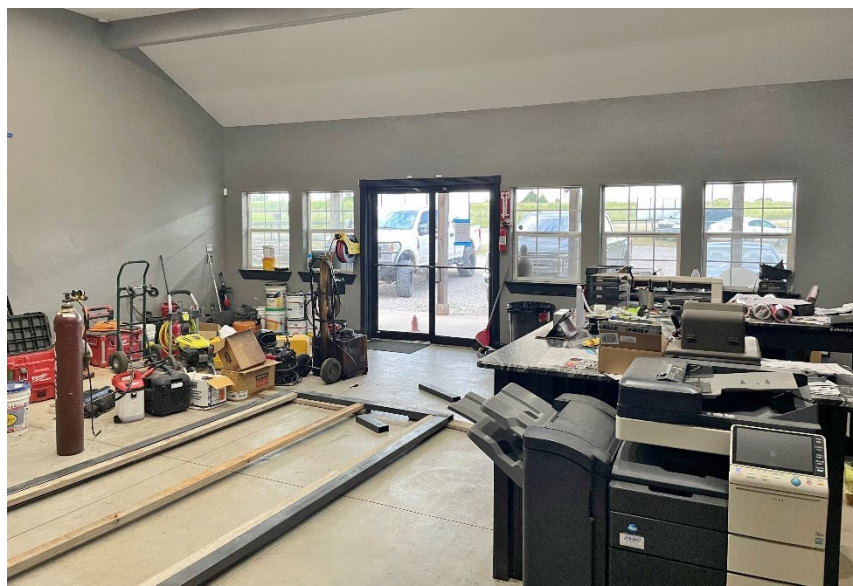


PROPERTY HIGHLIGHTS

- Free Standing Building
- Ample Parking
- I-35 Visibility
- Yard for Storage
- Two Office Spaces

LOCATION HIGHLIGHTS

- Within 1.5 Miles of I-35 Entrance



NAIRED

405.840.0600
NAIRED.COM

BOB SULLIVAN, CCIM
405.641.9798
RSULLIVAN@CCIM.NET

CLARK EVERETT
405.985.8424
CLARK@NAIRED.COM



NAIRED

405.840.0600
NAIRED.COM

BOB SULLIVAN, CCIM
405.641.9798
RSULLIVAN@CCIM.NET

CLARK EVERETT
405.985.8424
CLARK@NAIRED.COM



DEMOGRAPHICS

	1 MILE	3 MILE	5 MILE
POPULATION	31	474	3,094
AVERAGE HOUSEHOLD INCOME	\$84,223	\$78,995	\$72,566
TOTAL HOUSEHOLDS	9	183	1,253

NAIRED

405.840.0600
NAIRED.COM

FOLLOW US @NAIRED_CRE



No warranty or representation, express or implied, is made as to the accuracy of the information contained herein, and the same is submitted subject to errors, omissions, change of price, rental or other conditions, prior to sale, lease, or financing, or withdrawal without notice, and of any special listing conditions imposed by our principals no warranties or representations are made as to the condition of the property or any hazards contained therein are any to be implied.