

Sales Price: \$2,600,000



3031 W. Memorial Road
Oklahoma City, Oklahoma 73134

PROPERTY HIGHLIGHTS

- Two Story Restaurant Building
- 26' Vent Hood
- 7' x 18' & 7' x 29' Walk In Coolers
- 7' x 9' Walk In Freezer
- Ample Parking
- Monument Sign Available Along Memorial Road
- Functional Bar Area



LOCATION HIGHLIGHTS

- Easy Access to Kilpatrick Turnpike
- Close Proximity to Chisholm Creek Development & Quail Springs Mall

TOTAL SF	9,774 SF on 1.52 Acres
BUILT	2003
ZONED	C-3

David Hartnack
+1 405 761 8955
davidh@naisullivangroup.com

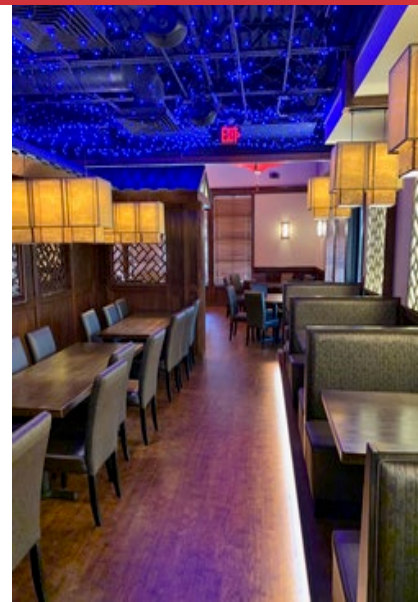
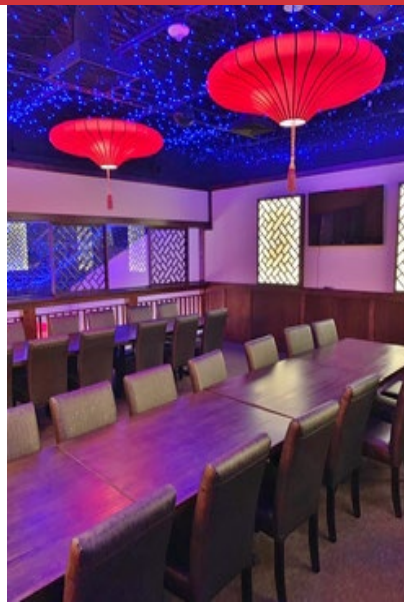
Sam Swanson
+1 405 208 2046
sam@naisullivangroup.com

Nathan Wilson
+1 405 760 5327
nathan@naisullivangroup.com

+1 405 840 0600 OFFICE

4045 N.W. 64th Street, Suite 340
Oklahoma City, OK 73116

www.naisullivangroup.com



David Hartnack
+1 405 761 8955
davidh@naisullivangroup.com

Sam Swanson
+1 405 208 2046
sam@naisullivangroup.com

Nathan Wilson
+1 405 760 5327
nathan@naisullivangroup.com

+1 405 840 0600 OFFICE

4045 N.W. 64th Street, Suite 340
Oklahoma City, OK 73116

www.naisullivangroup.com



David Hartnack
+1 405 761 8955
davidh@naisullivangroup.com

Sam Swanson
+1 405 208 2046
sam@naisullivangroup.com

Nathan Wilson
+1 405 760 5327
nathan@naisullivangroup.com

+1 405 840 0600 OFFICE

4045 N.W. 64th Street, Suite 340
Oklahoma City, OK 73116

www.naisullivangroup.com



Population	1 Mile: 6,190	3 Miles: 69,690	5 Miles: 177,030
Average Household Income	1 Mile: \$74,978	3 Miles: \$94,399	5 Miles: \$97,979
Total Households	1 Mile: 3,518	3 Miles: 31,980	5 Miles: 75,190

David Hartnack
+1 405 761 8955
davidh@naisullivangroup.com

Sam Swanson
+1 405 208 2046
sam@naisullivangroup.com

Nathan Wilson
+1 405 760 5327
nathan@naisullivangroup.com

+1 405 840 0600 OFFICE

4045 N.W. 64th Street, Suite 340
Oklahoma City, OK 73116

www.naisullivangroup.com