

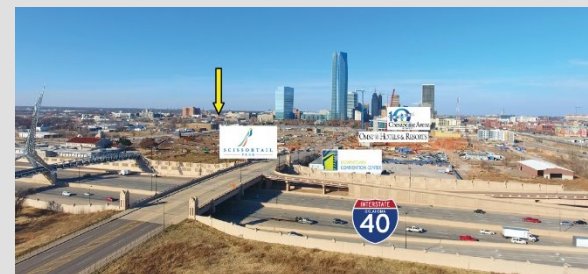


405 S. Walker Avenue

Oklahoma City, Oklahoma 73109

PROPERTY HIGHLIGHTS

- Located within Strawberry Fields Mixed Use Development
- West of Scissor Tail Park
- Easy Access to I-40
- Close Proximity to Bricktown
- 2 Blocks West of New Omni Hotel & Convention Center



TOTAL ACRES

0.56 Acres

ZONED

DBD

NO WARRANTY OR REPRESENTATION, EXPRESS OR IMPLIED, IS MADE AS TO THE ACCURACY OF THE INFORMATION CONTAINED HEREIN, AND THE SAME IS SUBMITTED SUBJECT TO ERRORS, OMISSIONS, CHANGE OF PRICE, RENTAL OR OTHER CONDITIONS, PRIOR SALE, LEASE OR FINANCING, OR WITHDRAWAL WITHOUT NOTICE, AND OF ANY SPECIAL LISTING CONDITIONS IMPOSED BY OUR PRINCIPALS NO WARRANTIES OR REPRESENTATIONS ARE MADE AS TO THE CONDITION OF THE PROPERTY OR ANY HAZARDS CONTAINED THEREIN ARE ANY TO BE IMPLIED.

David Hartnack

+1 405 761 8955

davidh@naisullivangroup.com

Sam Swanson

+1 405 208 2046

sam@naisullivangroup.com

Nathan Wilson

+1 405 760 5327

nathan@naisullivangroup.com

4045 N.W. 64th Street, Suite 340
Oklahoma City, OK 73116

www.naisullivangroup.com

+1 405 840 0600 OFFICE
+1 405 840 0610 FAX



Population	1 Mile: 5,766	3 Miles: 88,018	5 Miles: 232,916
Average Household Income	1 Mile: \$61,784	3 Miles: \$32,807	5 Miles: \$35,845
Total Households	1 Mile: 1,910	3 Miles: 32,826	5 Miles: 89,989

NO WARRANTY OR REPRESENTATION, EXPRESS OR IMPLIED, IS MADE AS TO THE ACCURACY OF THE INFORMATION CONTAINED HEREIN, AND THE SAME IS SUBMITTED SUBJECT TO ERRORS, OMISSIONS, CHANGE OF PRICE, RENTAL OR OTHER CONDITIONS, PRIOR SALE, LEASE OR FINANCING, OR WITHDRAWAL WITHOUT NOTICE, AND OF ANY SPECIAL LISTING CONDITIONS IMPOSED BY OUR PRINCIPALS NO WARRANTIES OR REPRESENTATIONS ARE MADE AS TO THE CONDITION OF THE PROPERTY OR ANY HAZARDS CONTAINED THEREIN ARE ANY TO BE IMPLIED.

David Hartnack
+1 405 761 8955
davidh@naisullivangroup.com

Sam Swanson
+1 405 208 2046
sam@naisullivangroup.com

Nathan Wilson
+1 405 760 5327
nathan@naisullivangroup.com

4045 N.W. 64th Street, Suite 340
Oklahoma City, OK 73116
www.naisullivangroup.com

+1 405 840 0600 OFFICE
+1 405 840 0610 FAX