

6208, 6212, 6216 SE 15th STREET
MIDWEST CITY, OK 73110

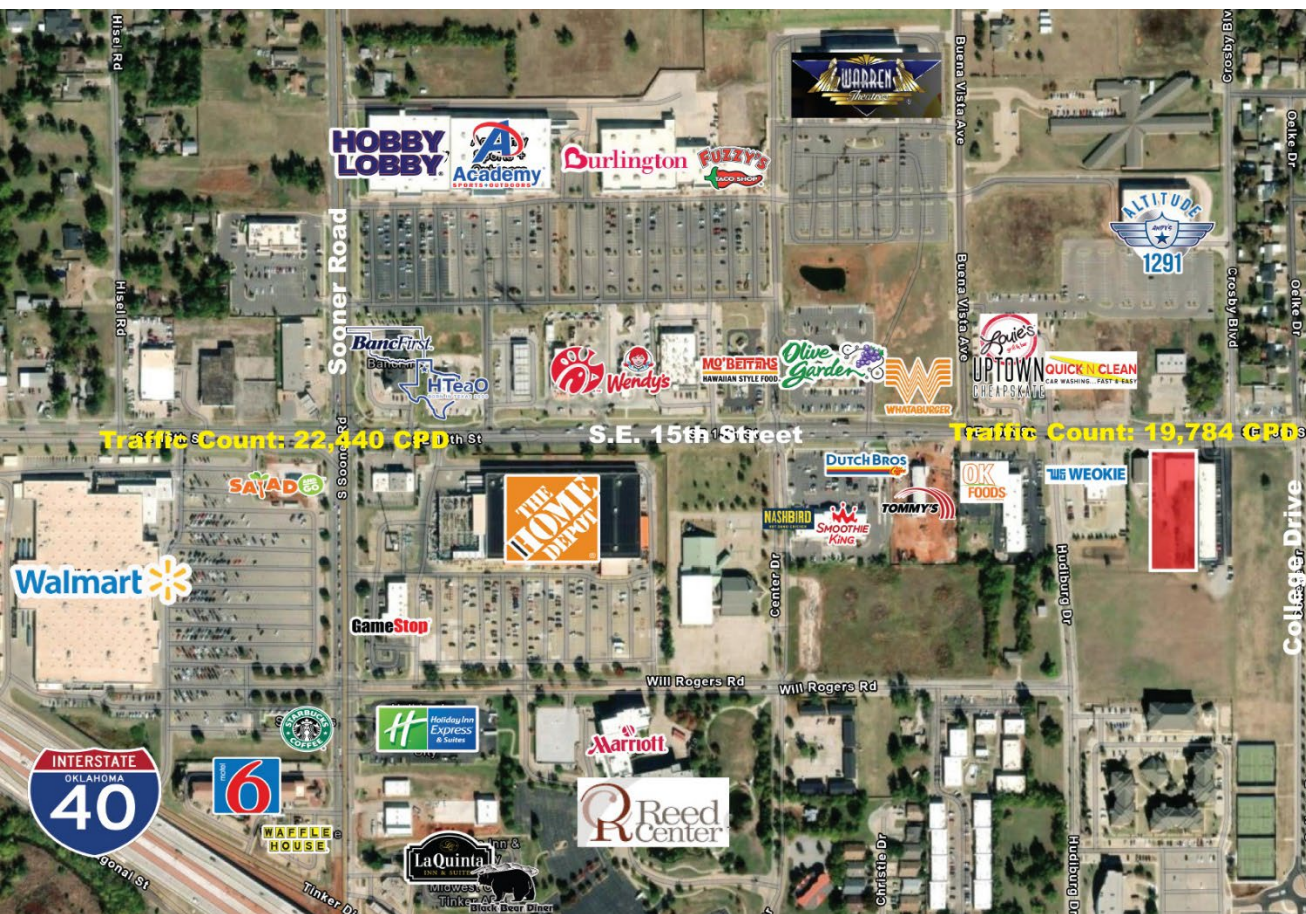
Commercial Land For Sale

1.12 Acres MOL

\$795,000

NAIRED

COMMERCIAL
REAL ESTATE



NAIRED

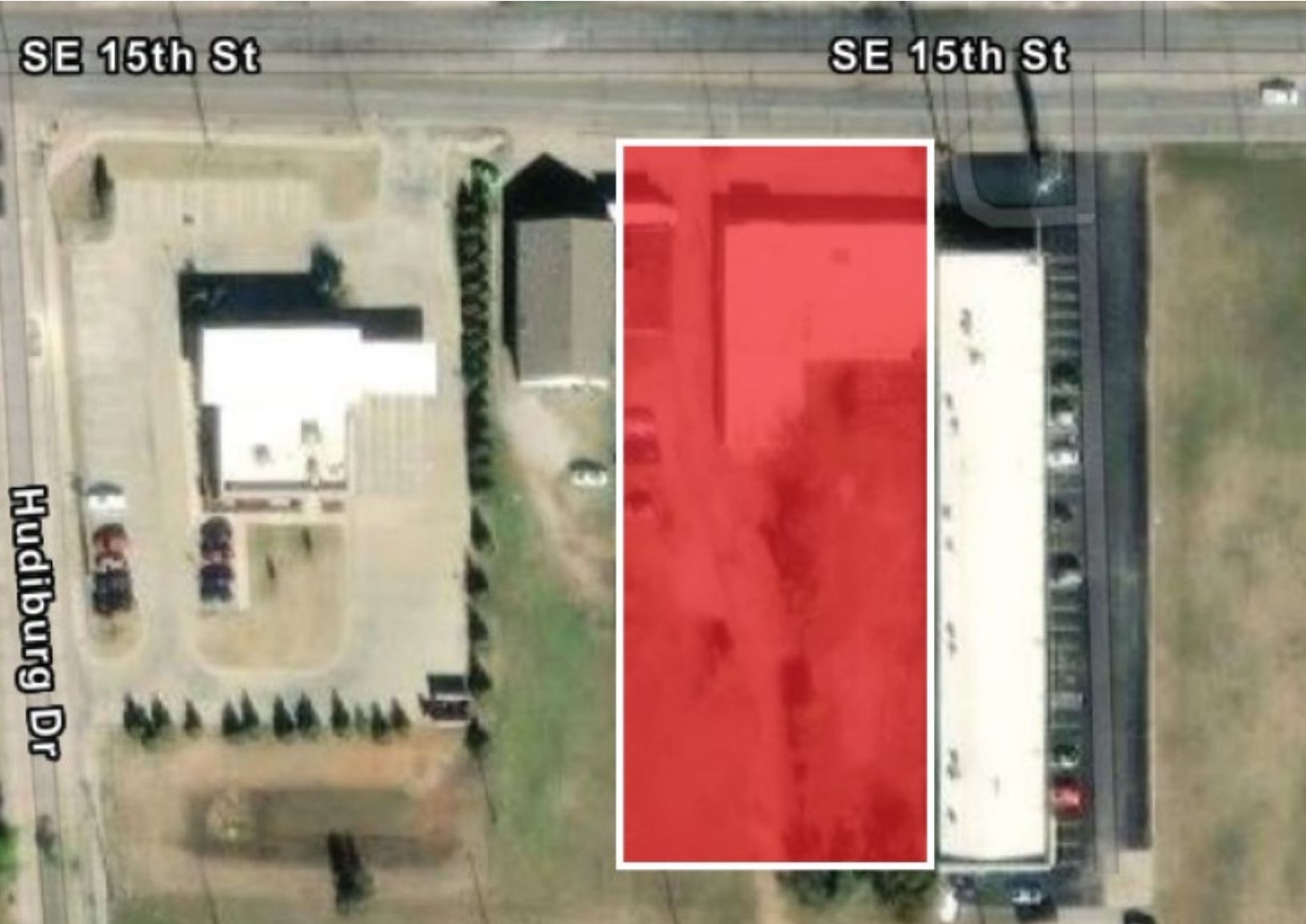
405.840.0600

NAIRED.COM

BOB SULLIVAN, CCIM

405.641.9798

RSULLIVAN@CCIM.NET



PROPERTY HIGHLIGHTS

- 1.12 Acres MOL
- Zoned: Commercial
- New Development Land at Adjusted Price!
- Very Heavy Traffic & Entertainment Spot- Near the Warren Theater
- Commercial Zoning
- Ready for Development, Deep Lots

LOCATION HIGHLIGHTS

- Frontage: 100' on S.E.15th Street
- Heavy Traffic Corridor
- Great Location Near Booming S.E. 15th & Sooner

NAIRED

405.840.0600

NAIRED.COM

BOB SULLIVAN, CCIM

405.641.9798

RSULLIVAN@CCIM.NET



DEMOGRAPHICS

	1 MILE	3 MILE	5 MILE
POPULATION	9,785	73,761	134,548
AVERAGE HOUSEHOLD INCOME	\$50,535	\$62,088	\$62,837
TOTAL HOUSEHOLDS	4,294	29,785	53,328

NAIRED

405.840.0600
NAIRED.COM

FOLLOW US @NAIRED_CRE



No warranty or representation, express or implied, is made as to the accuracy of the information contained herein, and the same is submitted subject to errors, omissions, change of price, rental or other conditions, prior to sale, lease, or financing, or withdrawal without notice, and of any special listing conditions imposed by our principals no warranties or representations are made as to the condition of the property or any hazards contained therein are any to be implied.