

6501 SUPERIOR AVENUE
OKLAHOMA CITY, OK 73149

Industrial Warehouse For Lease

2,985 SF-3,575 SF

\$10.50/SF/YR/NNN

NAIRED

COMMERCIAL
REAL ESTATE



NAIRED

405.840.0600
NAIRED.COM

MATTHEW PIERCE
405.203.3636
MATT@NAIRED.COM

CADE FLESNER
760.889.2305
CADE@NAIRED.COM

ZAC MCQUEEN
405.476.9199
ZAC@NAIRED.COM

SE 64th St

Superior Ave

Superior Ave

E

H

PROPERTY HIGHLIGHTS

- **6501 Superior Avenue-Suite E:
2,985 Total SF**

- 340 SF Office
- 15'- 20' Clear Height
- (1) Grade Level Door (12' x 14')
- (1) ADA Restroom

- **6501 Superior Avenue-Suite H:
3,575 Total SF**

- Heated Warehouse
- (2) Grade Level Doors (12' x 14')
- 15' - 20' Clear Height
- Office Build to Suit

LOCATION HIGHLIGHTS

- Easy Access to I-35 & I-240
- Close Proximity to Cross Roads Mall
- 15 Minutes to Will Rogers World Airport
- 10 Minutes to Downtown OKC

NAIRED

405.840.0600

NAIRED.COM

MATTHEW PIERCE
405.203.3636
MATT@NAIRED.COM

CADE FLESNER
760.889.2305
CADE@NAIRED.COM

ZAC MCQUEEN
405.476.9199
ZAC@NAIRED.COM

SUITE E



2,985 SF

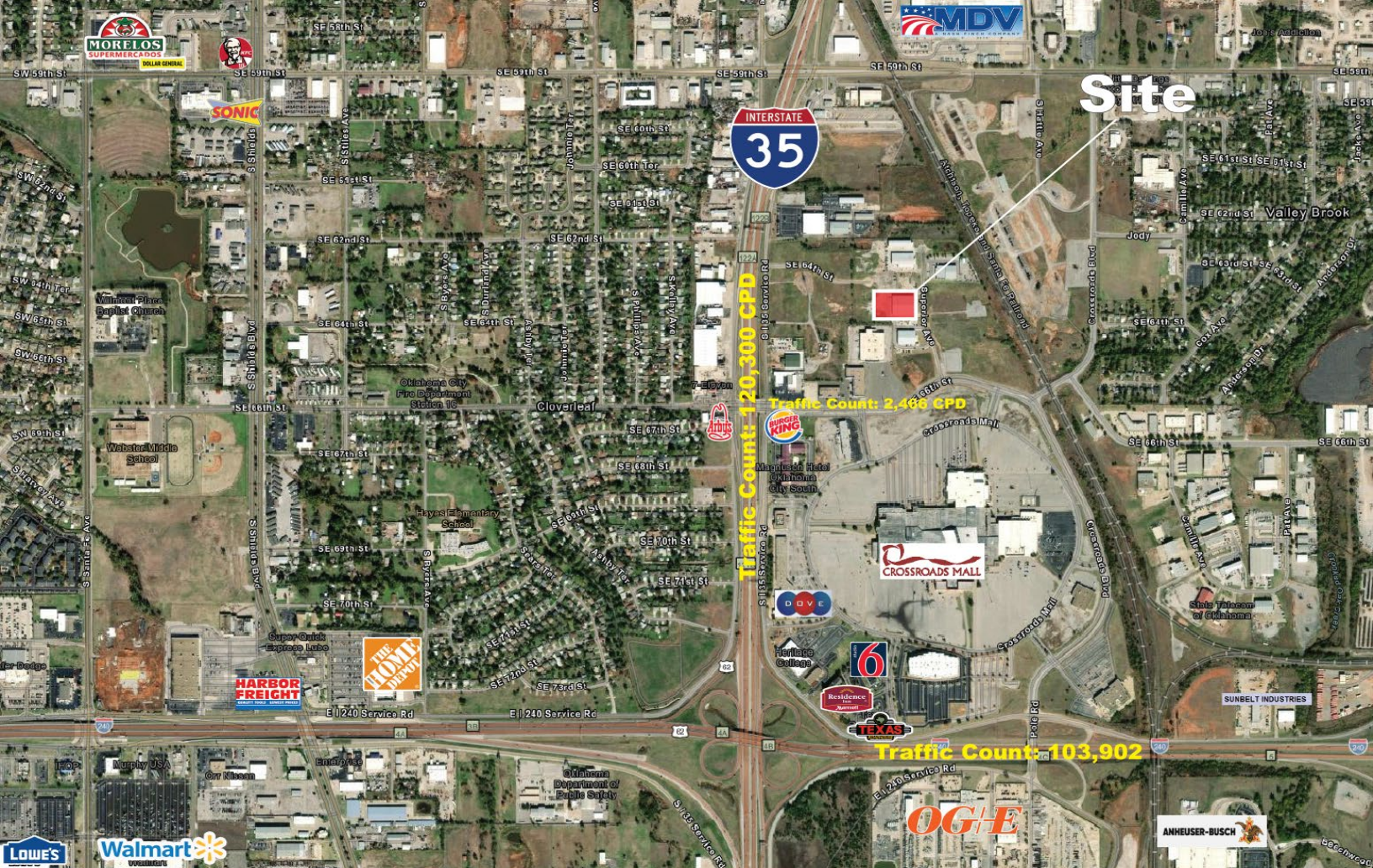
NAIRED

405.840.0600
NAIRED.COM

MATTHEW PIERCE
405.203.3636
MATT@NAIRED.COM

CADE FLESNER
760.889.2305
CADE@NAIRED.COM

ZAC MCQUEEN
405.476.9199
ZAC@NAIRED.COM



DEMOGRAPHICS

	1 MILE	3 MILE	5 MILE
POPULATION	4,068	73,731	239,240
AVERAGE HOUSEHOLD INCOME	\$44,099	\$54,077	\$62,935
TOTAL HOUSEHOLDS	1,444	27,999	90,038

NAIRED

405.840.0600
NAIRED.COM

FOLLOW US @NAIRED_CRE



No warranty or representation, express or implied, is made as to the accuracy of the information contained herein, and the same is submitted subject to errors, omissions, change of price, rental or other conditions, prior to sale, lease, or financing, or withdrawal without notice, and of any special listing conditions imposed by our principals no warranties or representations are made as to the condition of the property or any hazards contained therein are any to be implied.