

Lease Price: \$8.00/SF/YR/NNN  
Estimated NNN Charges: \$0.90/SF



## 825 N.W. 24<sup>th</sup> Street-BUILDING B

Moore, Oklahoma 73160

### PROPERTY HIGHLIGHTS

- Fully Climate Controlled Building
- Open Warehouse
- Very clean and Ready to Lease
- Multiple 240V Plug Ins
- 14' Clear Ceiling Height
- (1) 12' x 10' Grade Door

### LOCATION HIGHLIGHTS

- Just West of I-35
- 15-20 Minute Drive to Downtown OKC
- 15-20 Minute Drive to Will Rogers World Airport
- 15-20 Minute Drive to the University of Oklahoma
- 15-20 Minute Drive to Tinker Air Force Base



TOTAL SF	7,290 SF on 2.64 Acres MOL
BUILT	2010
ZONED	C-5

**Amir Shams**  
+1 405 313 0333  
amir@naisullivangroup.com

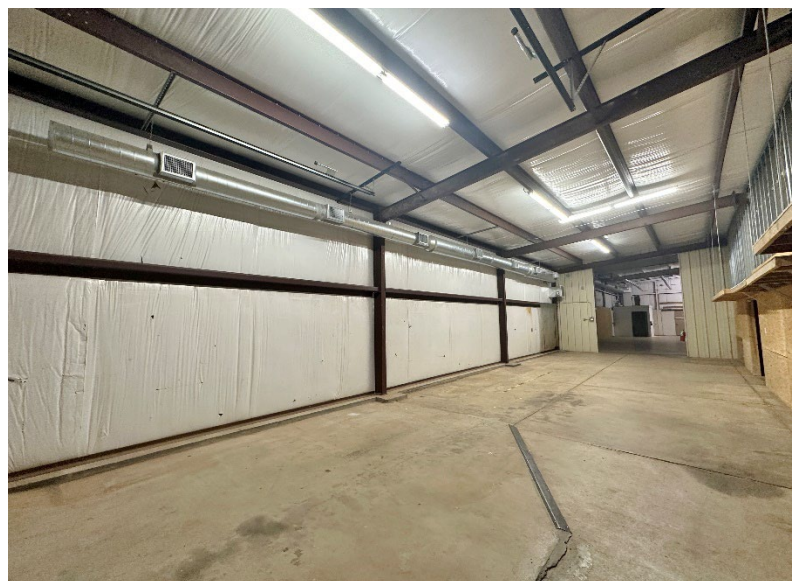
**Zac McQueen**  
+1 405 476 9199  
zac@naisullivangroup.com

**RJ Jimenez**  
+1 940 597 9341  
rj@naisullivangroup.com

**+1 405 840 0600 OFFICE**

4045 N.W. 64<sup>th</sup> Street, Suite 340  
Oklahoma City, OK 73116

[www.naisullivangroup.com](http://www.naisullivangroup.com)



**Amir Shams**  
+1 405 313 0333  
amir@naisullivangroup.com

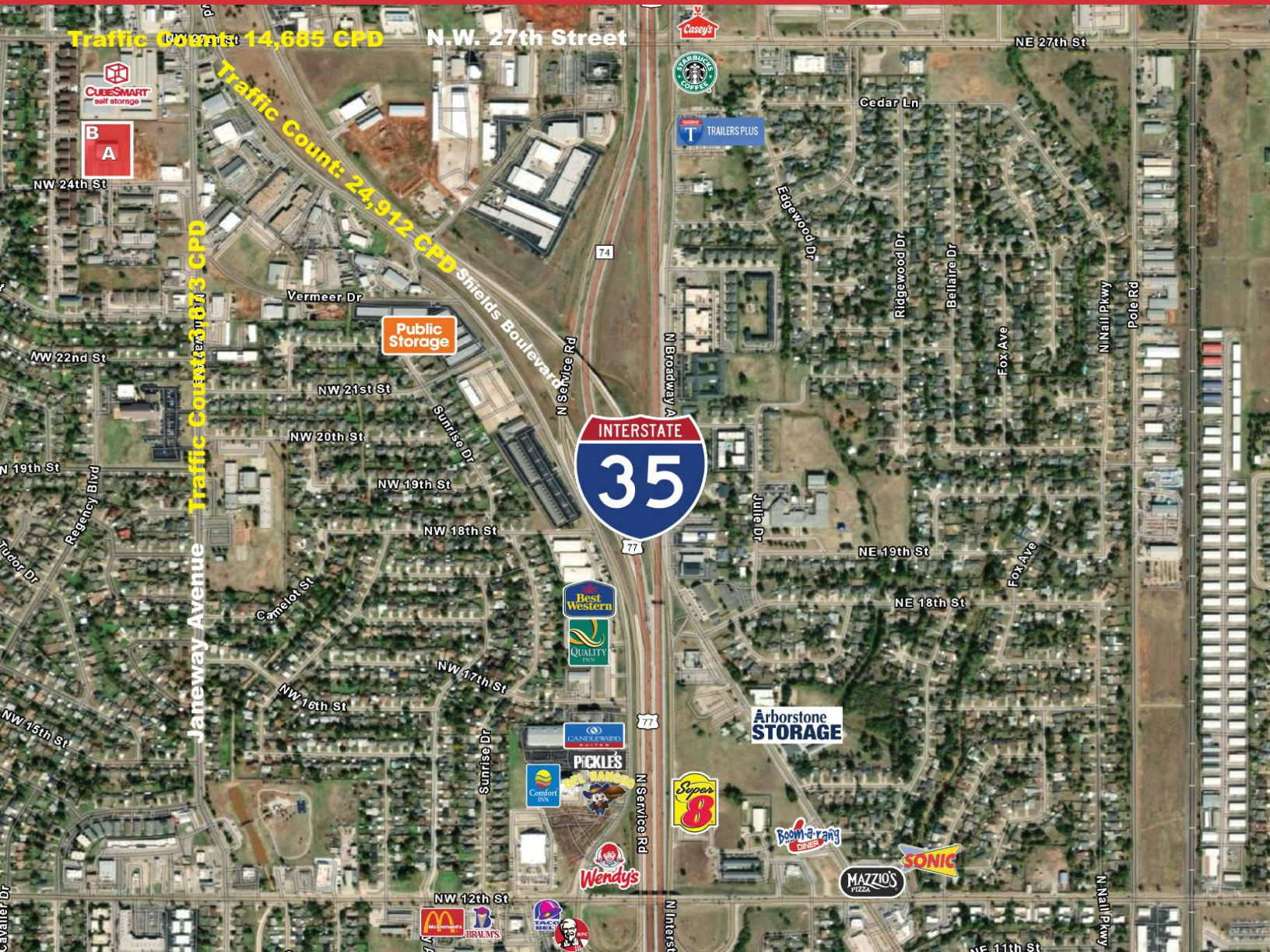
**Zac McQueen**  
+1 405 476 9199  
zac@naisullivangroup.com

**RJ Jimenez**  
+1 940 597 9341  
rj@naisullivangroup.com

**+1 405 840 0600 OFFICE**

4045 N.W. 64<sup>th</sup> Street, Suite 340  
Oklahoma City, OK 73116

**www.naisullivangroup.com**



**Amir Shams**  
 +1 405 313 0333  
 amir@naisullivangroup.com

**Zac McQueen**  
 +1 405 476 9199  
 zac@naisullivangroup.com

**RJ Jimenez**  
 +1 940 597 9341  
 rj@naisullivangroup.com

**+1 405 840 0600 OFFICE**

4045 N.W. 64<sup>th</sup> Street, Suite 340  
 Oklahoma City, OK 73116

**www.naisullivangroup.com**

NO WARRANTY OR REPRESENTATION, EXPRESS OR IMPLIED, IS MADE AS TO THE ACCURACY OF THE INFORMATION CONTAINED HEREIN, AND THE SAME IS SUBMITTED SUBJECT TO ERRORS, OMISSIONS, CHANGE OF PRICE, RENTAL OR OTHER CONDITIONS, PRIOR SALE, LEASE OR FINANCING, OR WITHDRAWAL WITHOUT NOTICE, AND OF ANY SPECIAL LISTING CONDITIONS IMPOSED BY OUR PRINCIPALS NO WARRANTIES OR REPRESENTATIONS ARE MADE AS TO THE CONDITION OF THE PROPERTY OR ANY HAZARDS CONTAINED THEREIN ARE ANY TO BE IMPLIED.