

I-35 AT COUNTY LINE ARDMORE, OK 73401

Agricultural Land For Sale

13.66 Acres MOL

Sales Price: \$625,000 (\$1.05/SF)

- 660 ft. of Frontage on I-35
- High Visibility, Just South of Ardmore
- West Side of I-35, Just North of County Line Exit Off Ramp
- Perfect Location for Travel or Hospitality Services
- Includes Tenant \$7,900/Year (5 Years)
- Dimensions: 900' x 660'
- Close to East Bound Lake Murray
- Recreational Area Access
- Half Way Between Oklahoma City & Dallas on I-35



NAIRED

COMMERCIAL
REAL ESTATE

NAIRED

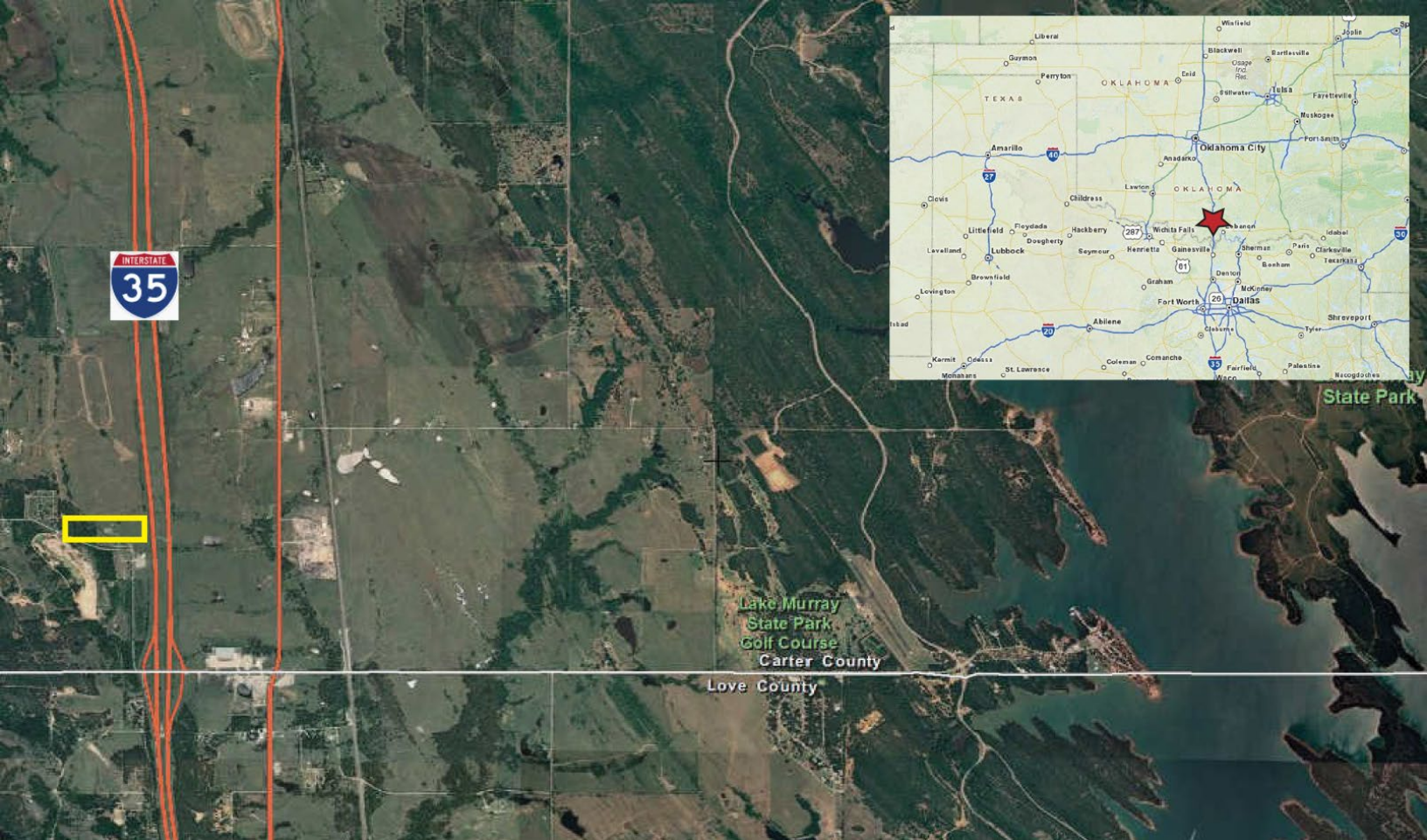
405.840.0600

NAIRED.COM

DARRYL MEASON

405.205.9440

DARRYL@NAIRED.COM



DEMOGRAPHICS

	1 MILE	3 MILE	5 MILE
POPULATION	735	14,495	25,912
AVERAGE HOUSEHOLD INCOME	\$62,549	\$52,808	\$50,240
TOTAL HOUSEHOLDS	287	5,997	10,617

NAIRED

405.840.0600
NAIRED.COM

FOLLOW US @NAIRED_CRE



No warranty or representation, express or implied, is made as to the accuracy of the information contained herein, and the same is submitted subject to errors, omissions, change of price, rental or other conditions, prior to sale, lease, or financing, or withdrawal without notice, and of any special listing conditions imposed by our principals no warranties or representations are made as to the condition of the property or any hazards contained therein are any to be implied.