



**Sales Price:
\$12,400,000**

N.W. 10th Street & Yukon Parkway

Yukon, Oklahoma 73009

PROPERTY HIGHLIGHTS

- **63 Acres MOL Prime Development Land**
- Zoned: I-2
- High Traffic & High Visibility
- Booming Trade Area in West Oklahoma City
- Multi Use 2.7 Million SF Opportunity
- Great Location for Office, Retail, Multi-Family or Storage

LOCATION HIGHLIGHTS

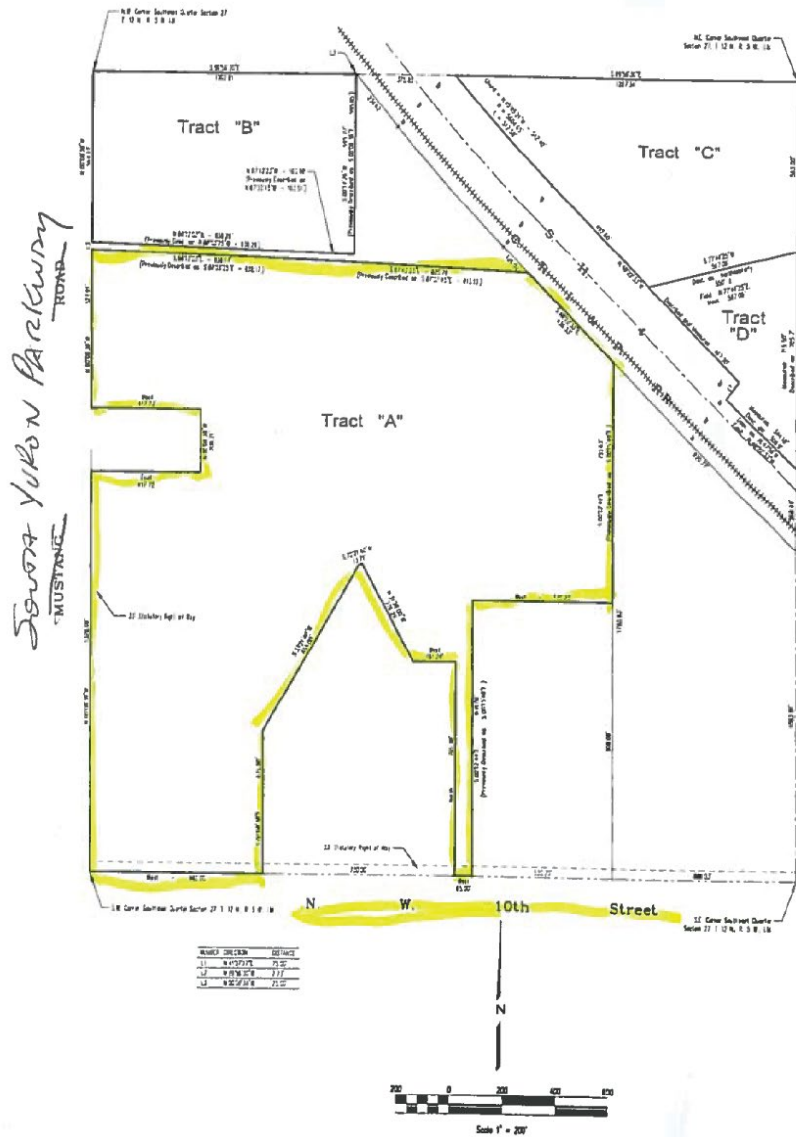
- Dimensions: Irregular
- Frontage: 725' on N.W. 10th Street & 1844'MOL on S. Yukon Parkway

Darryl Meason
+1 405 205 9440
 darryl@naisullivangroup.com

+1 405 840 0600 OFFICE

4045 N.W. 64th Street, Suite 340
 Oklahoma City, OK 73116

www.naisullivangroup.com



Population	1 Mile: 5,444	3 Miles: 59,026	5 Miles: 88,499
Average Household Income	1 Mile: \$72,515	3 Miles: \$64,827	5 Miles: \$62,049
Total Households	1 Mile: 2,105	3 Miles: 22,223	5 Miles: 33,683

Darryl Meason
+1 405 205 9440
 darryl@naisullivangroup.com

+1 405 840 0600 OFFICE

4045 N.W. 64th Street, Suite 340
 Oklahoma City, OK 73116

www.naisullivangroup.com